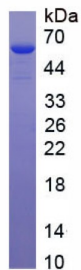


Human Aldehyde Dehydrogenase 1 Family, Member B1 (ALDH1B1) Protein

Catalogue No.: abx652446



SDS-PAGE analysis of recombinant Human ALDH1B1 Protein.

Human Aldehyde Dehydrogenase 1 Family, Member B1 (ALDH1B1) Protein is a Recombinant Human protein expressed in E. coli.

Target:	Aldehyde Dehydrogenase 1 Family, Member B1 (ALDH1B1)
Origin:	Human
Expression:	Recombinant
Tested Applications:	WB, SDS-PAGE
Host:	E. coli
Conjugation:	Unconjugated
Form:	Lyophilized
Purity:	> 95%
Reconstitution:	To keep the original salt concentration, we recommend reconstituting to the original concentration prior to lyophilization (see Concentration) in ddH ₂ O. If a lower concentration is required, dilute in 20 mM Tris, 150 mM NaCl, pH 8.0. If a higher concentration is required, the product can be reconstituted directly in 20 mM Tris, 150 mM NaCl, pH 8.0, though please note that this will change the overall salt concentration. The stock concentration should be between 0.1-1.0 mg/ml. Do not vortex.
Storage:	Store at 2-8 °C for up to one month. Store at -80 °C for up to one year. Avoid repeated freeze/thaw cycles.
UniProt Primary AC:	P30837 (UniProt , ExPASy)
Gene Symbol:	ALDH1B1

Datasheet

Version: 6.0.0
Revision date: 03 Dec 2024



GeneID: [219](#)

OMIM: [100670](#)

KEGG: hsa:219

String: [9606.ENSP00000366927](#)

Molecular Weight: Calculated MW: 59 kDa
Observed MW (SDS-PAGE): 59 kDa

Sequence Fragment: Arg18-Ser517

Sequence: RYS SAAALPSPIL NPDIPYNQLF INNEWQDAVS KKTFTVNPT TGEVIGHVAE GDRADVDRAV
KAARE
AFRLG SPWRRMDASE RGRLLNLLAD LVERDRVYLA SLETLDNGKP FQESYALDLD EVIKVYRYFA
GWA
DKWHGKT IPMDGQHFCF TRHEPVGVCV QIIPWNFPLV MQGWKLAPAL ATGNTVVMKV
AEQTPLSALY L
ASLIKEAGF PPGVVNIITG YGPTAGAAIA QHVDVDKVAF TGSTEVGHLI QKAAGDSNLK
RVTLELGGKS
PSIVLADADM EHAVEQCHEA LFFNMGQCCC AGSRTFVEES IYNEFLERTV EKAKQRKVG
PFELDTQQ
GP QVDKEQFERV LGYIQLGQKE GAKLLCGGER FGERGFFIKP TVFGGVQDDM RIAKEEIFGP
VQPLFK
FKKI EEVVERANNT RYGLAAVFT RDLDKAMYFT QALQAGTVVW NTYNIVTCHT PFGGFKESGN
GREL
GEDGLK AYTEVKTVTI KVPQKNS

Tag: N-terminal His tag

Buffer: Prior to lyophilization: 20 mM Tris, 150 mM NaCl, pH 8.0, containing 0.01% Sarcosyl, 5% Trehalose.

Activity: Not tested

Concentration: Prior to lyophilization: 200 µg/ml

Note: This product is for research use only.
Not for human consumption, cosmetic, therapeutic or diagnostic use.