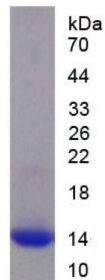


Rat Complement Fragment C4a (C4a) Protein

Catalogue No.: abx653025



Rat Complement Fragment C4a (C4a) Protein is a Recombinant Rat protein expressed in *E. coli*.

Target: Complement Fragment C4a (C4a)

Origin: Rat

Expression: Recombinant

Tested Applications: WB, SDS-PAGE

Host: *E. coli*

Conjugation: Unconjugated

Form: Lyophilized

Purity: > 90%

Reconstitution: To keep the original salt concentration, we recommend reconstituting to the original concentration prior to lyophilization (see Concentration) in ddH₂O. If a lower concentration is required, dilute in 10 mM PBS, pH 7.4. If a higher concentration is required, the product can be reconstituted directly in 10 mM PBS, pH 7.4, though please note that this will change the overall salt concentration. The stock concentration should be between 0.1-1.0 mg/ml. Do not vortex.

Storage: Store at 2-8 °C for up to one month. Store at -80 °C for up to one year. Avoid repeated freeze/thaw cycles.

Molecular Weight: Calculated MW: 12.3 kDa
Observed MW: 14 kDa

Sequence Fragment: Asn678-Arg753

Datasheet

Version: 4.0.0

Revision date: 10 Feb 2025



Sequence: NVN FQKAISEKLG QYSSPDTKRC CQDGMTKLPM ARTCEQRAAR VPQPACREPF LSCCKFAEDL
RRNQT
RSQAG LAR

Tag: N-terminal His tag

Buffer: Prior to lyophilization: PBS, pH 7.4, containing 0.01% Sarcosyl, 5% Trehalose.

Activity: Not tested

Concentration: Prior to lyophilization: 200 µg/ml

Note: This product is for research use only.
Not for human consumption, cosmetic, therapeutic or diagnostic use.

For Reference Only