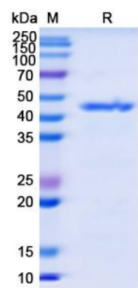


Datasheet

Version: 2.0.0
Revision date: 06 Jan 2025

Human E2F Transcription Factor 1 (E2F1) Protein

Catalogue No.: abx653229



SDS-PAGE analysis of Human E2F Transcription Factor 1 (E2F1) Protein.

Human E2F Transcription Factor 1 (E2F1) Protein is a Recombinant Human protein expressed in *E. coli*.

Target:	E2F Transcription Factor 1 (E2F1)
Origin:	Human
Expression:	Recombinant
Tested Applications:	ELISA, WB, SDS-PAGE
Host:	<i>E. coli</i>
Conjugation:	Unconjugated
Form:	Lyophilized
Purity:	> 90% (SDS-PAGE)
Reconstitution:	Reconstitute in sterile water to produce a stock solution.
Storage:	Store at 2-8 °C for up to one week. Store between -20 °C and -80 °C for up to one year. Avoid repeated freeze/thaw cycles.
UniProt Primary AC:	Q01094 (UniProt , ExPASy)
Gene Symbol:	E2F1
GeneID:	1869
OMIM:	189971
HGNC:	3113

Datasheet

Version: 2.0.0
Revision date: 06 Jan 2025



KEGG: hsa:1869

Ensembl: ENSG00000101412

String: [9606.ENSP00000345571](#)

Molecular Weight: Calculated MW: 40.94 kDa

Sequence Fragment: Val88-Phe437

Sequence: VKR RLDLETDHQY LAESSGPARG RGRHPGKGVK SPGEKSRYET SLNLTTKRFL ELLSHSADGV
VDLNW
AAEVL KVQKRRRIYDI TNVLEGIQLI AKKSKNHIQW LGSHTTVGVG GRLEGLTQDL RQLQESEQQL
DHL
MNICTTQ LRLLEDSTDS QRLAYVTCQD LRSIADPAEQ MVMVIKAPPE TQLQAVDSSE NFIQSLKSKQ
G
PIDVFLCPE ETVGGISPGK TPSQEVTSSEE ENRATDSATI VSPPPSSPPS SLTTDPSQSL
LSLEQEPLLS
RMGSLRAPVD EDRLSPLVAA DLSLEHVRED FSGLLPPEFI SLSPPEALD YHFGLEEGER
IRDLFDCD
FG DLTPPDF

Tag: N-terminal His tag

Buffer: Prior to lyophilization: PBS, pH 7.4, 0.02% NLS, 1 mM EDTA, 4% Trehalose and 1% Mannitol.

Activity: Not tested

Concentration: Prior to lyophilization: 0.8 mg/ml

Note: This product is for research use only.
Not for human consumption, cosmetic, therapeutic or diagnostic use.