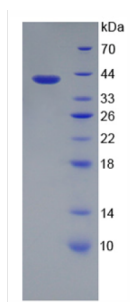
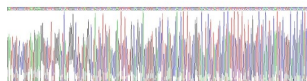


Rat Sodium/Glucose Cotransporter 2 (SGLT2) Protein

Catalogue No.: abx655080



SDS-PAGE analysis of recombinant Rat Sodium / Glucose Cotransporter 2 (SGLT2) Protein.



Gene sequencing extract of recombinant Rat Sodium / Glucose Cotransporter 2 (SGLT2) Protein.

Rat Sodium/Glucose Cotransporter 2 (SGLT2) Protein is a Recombinant Rat protein expressed in E. coli.

Target: Sodium/Glucose Cotransporter 2 (SGLT2)

Origin: Rat

Expression: Recombinant

Tested Applications: WB, SDS-PAGE

Host: E. coli

Conjugation: Unconjugated

Form: Lyophilized

Purity: > 90%

Reconstitution: To keep the original salt concentration, we recommend reconstituting to the original concentration prior to lyophilization (see Concentration) in ddH₂O. If a lower concentration is required, dilute in PBS, pH 7.4. If a higher concentration is required, the product can be reconstituted directly in PBS, pH 7.4, though please note that this will change the overall salt concentration. The stock concentration should be between 0.1-1.0 mg/ml. Do not vortex.

Datasheet

Version: 3.0.0

Revision date: 26 Mar 2025



Storage:	Store at 2-8 °C for up to one month. Store at -80 °C for up to one year. Avoid repeated freeze/thaw cycles.
Molecular Weight:	Calculated MW: 41.3 kDa Observed MW: 42 kDa
Sequence Fragment:	Thr546-Ala648
Tag:	N-terminal His and GST tags
Buffer:	Prior to lyophilization: PBS, pH 7.4, containing 0.01% Sarcosyl, 1 mM DTT, 5% Trehalose and Proclin-300.
Activity:	Not tested
Concentration:	Prior to lyophilization: 200 µg/ml
Note:	THIS PRODUCT IS FOR RESEARCH USE ONLY. NOT FOR USE IN DIAGNOSTIC, THERAPEUTIC OR COSMETIC PROCEDURES. NOT FOR HUMAN OR ANIMAL CONSUMPTION.

For Reference Only