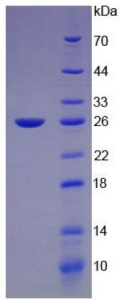
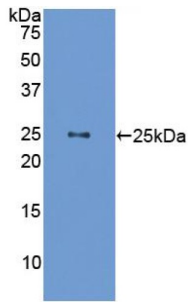


Mouse Somatotropin / Growth Hormone (GH1) Protein

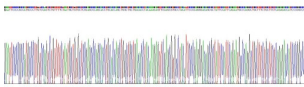
Catalogue No.: abx655656



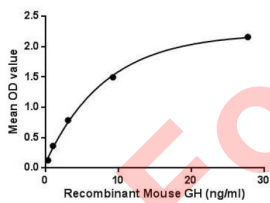
SDS-PAGE analysis of recombinant Mouse Somatotropin (GH1) Protein (Active).



WB analysis of recombinant Mouse Somatotropin (GH1) Protein (Active) using GH antibody.



Gene sequencing extract of Mouse Somatotropin (GH1) Protein (Active).



Binding Activity of Somatotropin (GH1) Protein (Active) with Growth hormone receptor (GHR).

Mouse Somatotropin / Growth Hormone (GH1) Protein (Active) is an Active Recombinant Mouse protein.

Target: Somatotropin / Growth Hormone (GH1)

Reactivity: Mouse

Origin: Mouse

Datasheet

Version: 3.0.0
Revision date: 14 Jan 2025



Expression: Recombinant

Tested Applications: WB, SDS-PAGE

Host: E. coli

Conjugation: Unconjugated

Form: Lyophilized

Purity: > 98%

Reconstitution: Reconstitute in ddH₂O to a concentration of 0.1-0.5 mg/ml. Do not vortex.

Storage: Store at 2-8 °C for up to one month. Store at -80 °C for up to one year. Avoid repeated freeze/thaw cycles.

UniProt Primary AC: P06880 ([UniProt](#), [ExPASy](#))

Gene Symbol: GH1

GeneID: [14599](#)

KEGG: mmu:14599

Ensembl: ENSMUSG00000020713

String: [10090.ENSMUSP00000099360](#)

Molecular Weight: Calculated MW: 25.4 kDa
Observed MW (SDS-PAGE): 25 kDa

Sequence Fragment: Pro28-Phe216

Sequence: PAM PLSSLFSNAV LRAQHLHQLA ADTYKEFERA YIPEGQRYSI QNAQA AFCFS ETIPAPTGKE
EAQQR
TDMEL LRFSLLLIQS WLGPVQFLSR IFTNSLMFGT SDRVYEKLD LEEGIQALMQ ELEDGSPRVG
QIL
KQTYDKF DANMRSDDAL LKNYGLLSCF KLDLHKAETY LRVMKCRRFV ESSCAF

Tag: N-terminal His tag

Buffer: Prior to lyophilization: 100 mM NaHCO₃, 500 mM NaCl, pH 8.3, containing 0.01% Sarcosyl, 5% Trehalose.

Activity: Active

Datasheet

Version: 3.0.0

Revision date: 14 Jan 2025



Endotoxin Level: < 1.0 EU/1 µg (LAL method).

Concentration: Prior to lyophilization: 60 µg/ml

Note: This product is for research use only.
Not for human consumption, cosmetic, therapeutic or diagnostic use.

For Reference Only