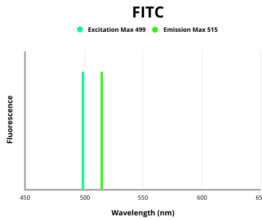


Killer Cell Immunoglobulin Like Receptor 2DL1 (KIR2DL1) Antibody (FITC)

Catalogue No.: abx336238



Fluorescence emission spectra of FITC.

KIR2DL1 Antibody (FITC) is a Rabbit Polyclonal against KIR2DL1.

Target:	Killer Cell Immunoglobulin Like Receptor 2DL1 (KIR2DL1)
Clonality:	Polyclonal
Reactivity:	Human
Host:	Rabbit
Recommended dilutions:	Optimal dilutions/concentrations should be determined by the end user.
Conjugation:	FITC
Excitation/Emission:	499/515
Laser Line:	488
Immunogen:	Recombinant Human Killer cell immunoglobulin-like receptor 2DL1 protein (162-267AA).
Isotype:	IgG
Form:	Liquid
Purity:	> 95%
Purification:	Purified by Protein G.
Storage:	Aliquot and store at -20°C. Avoid exposure to light. Avoid repeated freeze/thaw cycles.

Datasheet

Version: 1.0.0

Revision date: 01 Feb 2025

UniProt Primary AC: P43626 ([UniProt](#), [ExPASy](#))

Gene Symbol: KIR2DL1

GeneID: [3802](#)

KEGG: hsa:3802

String: [9606.ENSP00000336769](#)

Buffer: 0.01 M PBS, pH 7.4, 0.03% Proclin-300 and 50% Glycerol.

Note: This product is for research use only.

For Reference Only