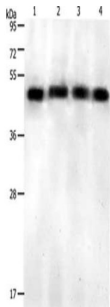
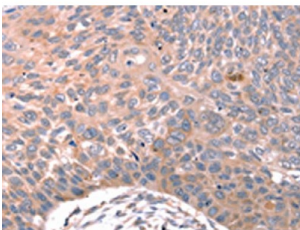


## KISS1 Receptor (KISS1R) Antibody

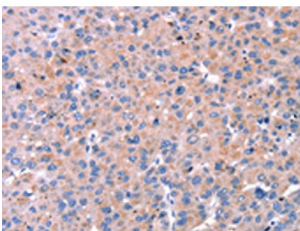
Catalogue No.: abx211840



WB analysis of (1) Jurkat cells, (2) HeLa cells, (3) 231 cells, and (4) Mouse pancreas tissue, using KISS1R antibody (1/500 dilution) and Goat anti-Rabbit IgG secondary antibody (1/8000 dilution). Exposure time was 10 minutes, gel was 12% SDS-PAGE.



IHC analysis of paraffin-embedded Human esophagus cancer tissue, using KISS1R antibody (1/25 dilution, 200X magnification).



IHC analysis of paraffin-embedded Human liver cancer tissue, using KISS1R antibody (1/25 dilution, 200X magnification).

KISS1R Antibody is a Rabbit Polyclonal against KISS1R.

**Target:** KISS1 Receptor (KISS1R)

**Clonality:** Polyclonal

**Reactivity:** Human

**Tested Applications:** ELISA, WB

**Host:** Rabbit

**Recommended dilutions:** ELISA: 1/1000 - 1/2000, WB: 1/200 - 1/1000. Optimal dilutions/concentrations should be determined by the end user.

**Conjugation:** Unconjugated

# Datasheet

Version: 3.0.0  
Revision date: 23 Feb 2025



<b>Immunogen:</b>	Synthetic peptide of human KISS1R.
<b>Isotype:</b>	IgG
<b>Form:</b>	Liquid
<b>Purification:</b>	Antigen Affinity Chromatography.
<b>Storage:</b>	Aliquot and store at -20°C. Avoid repeated freeze/thaw cycles.
<b>UniProt Primary AC:</b>	Q969F8 ( <a href="#">UniProt</a> , <a href="#">ExpASY</a> )
<b>Gene Symbol:</b>	KISS1R
<b>GeneID:</b>	<a href="#">84634</a>
<b>KEGG:</b>	hsa:84634
<b>String:</b>	<a href="#">9606.ENSP00000234371</a>
<b>Buffer:</b>	PBS, pH 7.4, containing 0.05% NaN <sub>3</sub> and 40% Glycerol.
<b>Note:</b>	This product is for research use only.

For Reference Only