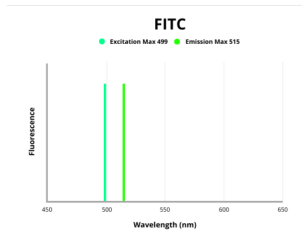


## Limbic System-Associated Membrane Protein (LSAMP) Antibody (FITC)

Catalogue No.: abx336382



Fluorescence emission spectra of FITC.

LSAMP Antibody (FITC) is a Rabbit Polyclonal against LSAMP.

<b>Target:</b>	Limbic System-Associated Membrane Protein (LSAMP)
<b>Clonality:</b>	Polyclonal
<b>Reactivity:</b>	Human
<b>Host:</b>	Rabbit
<b>Recommended dilutions:</b>	Optimal dilutions/concentrations should be determined by the end user.
<b>Conjugation:</b>	FITC
<b>Excitation/Emission:</b>	499/515
<b>Laser Line:</b>	488
<b>Immunogen:</b>	Recombinant Human Limbic system-associated membrane protein (168-287AA).
<b>Isotype:</b>	IgG
<b>Form:</b>	Liquid
<b>Purity:</b>	> 95%
<b>Purification:</b>	Purified by Protein G.
<b>Storage:</b>	Aliquot and store at -20°C. Avoid exposure to light. Avoid repeated freeze/thaw cycles.
<b>UniProt Primary AC:</b>	Q13449 ( <a href="#">UniProt</a> , <a href="#">ExPASy</a> )

# Datasheet

Version: 1.0.0  
Revision date: 12 Mar 2025



**Gene Symbol:** LSAMP

**GeneID:** [4045](#)

**KEGG:** hsa:4045

**String:** [9606.ENSP00000419000](#)

**Buffer:** 0.01 M PBS, pH 7.4, 0.03% Proclin-300 and 50% Glycerol.

**Note:** THIS PRODUCT IS FOR RESEARCH USE ONLY. NOT FOR USE IN DIAGNOSTIC, THERAPEUTIC OR COSMETIC PROCEDURES. NOT FOR HUMAN OR ANIMAL CONSUMPTION.

For Reference Only