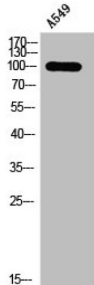


Serine/Threonine-Protein Kinase D1/2/3 Phospho-Ser738/742 (PRKD1/2/3 pS738/742) Antibody

Catalogue No.: abx329056



WB analysis of A549 cells, using PRKD1/2/3 pS738/742 Antibody.

Serine/Threonine-Protein Kinase D1/2/3 Phospho-Ser738/742 (PRKD1/2/3 pS738/742) Antibody is a Rabbit Polyclonal for the detection of PRKD1/PRKD2/PRKD3 when phosphorylated at Ser738/Ser742.

Target:	Serine/Threonine-Protein Kinase D1/2/3 Phospho-Ser738/742 (PRKD1/2/3 pS738/742)
Clonality:	Polyclonal
Target Modification:	Ser738/742
Modification:	Phosphorylation
Reactivity:	Human, Mouse, Rat
Tested Applications:	ELISA, WB, IHC
Host:	Rabbit
Recommended dilutions:	ELISA: 1/5000, WB: 1/500 - 1/2000, IHC: 1/100 - 1/300. Optimal dilutions/concentrations should be determined by the end user.
Conjugation:	Unconjugated
Immunogen:	Synthesized peptide derived from human PKD1/2/3 around the phosphorylation site of S738/S742.
Isotype:	IgG
Form:	Liquid
Purification:	Purified by affinity chromatography.
Storage:	Aliquot and store at -20°C. Avoid repeated freeze/thaw cycles.

Datasheet

Version: 3.0.0

Revision date: 26 Dec 2024



UniProt Primary AC: Q15139 ([UniProt](#), [ExPASy](#)) Q9BZL6 ([UniProt](#), [ExPASy](#)) O94806 ([UniProt](#), [ExPASy](#))

Buffer: PBS containing 50% glycerol, 0.5% BSA and 0.02% sodium azide.

Concentration: 1 mg/ml

Note: This product is for research use only.

For Reference Only