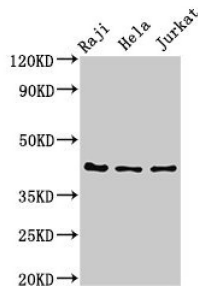


Pregnancy-Associated Glycoprotein 1 (PAG1) Antibody

Catalogue No.: abx333631



WB analysis of Raji, HeLa and Jurkat whole cell lysates, using PAG1 antibody (3 µg/ml) followed by Goat anti-Rabbit polyclonal antibody (1/50000 dilution). Calculated MW: 43 kDa, Observed MW: 43 kDa.

PAG 1 Antibody is a Rabbit Polyclonal against PAG 1.

Target:	Pregnancy-Associated Glycoprotein 1 (PAG1)
Clonality:	Polyclonal
Reactivity:	Human, Rat, Cow
Tested Applications:	ELISA, WB
Host:	Rabbit
Recommended dilutions:	WB: 1/500 - 1/5000. Optimal dilutions/concentrations should be determined by the end user.
Conjugation:	Unconjugated
Immunogen:	Recombinant Bovine Pregnancy-associated glycoprotein 1 protein (54-380 AA).
Isotype:	IgG
Form:	Liquid
Purity:	> 95%
Purification:	Purified by Protein G chromatography.
Storage:	Aliquot and store at -20°C. Avoid repeated freeze/thaw cycles.
UniProt Primary AC:	Q29432 (UniProt , ExPASy)
GeneID:	281964

Datasheet

Version: 9.0.0

Revision date: 17 Mar 2025



KEGG: bta:281964

String: [9913.ENSBTAP00000025593](#)

Buffer: 0.01 M PBS, pH 7.4, 0.03% Proclin-300 and 50% Glycerol.

Concentration: 1 mg/ml

Note: THIS PRODUCT IS FOR RESEARCH USE ONLY. NOT FOR USE IN DIAGNOSTIC, THERAPEUTIC OR COSMETIC PROCEDURES. NOT FOR HUMAN OR ANIMAL CONSUMPTION.

For Reference Only