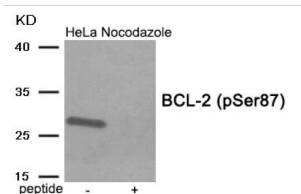


## BCL2 (pS87) Antibody

Catalogue No.: abx333406



WB analysis of HeLa cells, treated with Nocodazole, using BCL2 (pS87) antibody. Cells were treated with antigen specific peptide (right lane).

BCL2 (pS87) Antibody is a Rabbit Polyclonal against BCL2 (pS87).

<b>Target:</b>	BCL2 (pS87)
<b>Clonality:</b>	Polyclonal
<b>Reactivity:</b>	Human, Mouse, Rat
<b>Tested Applications:</b>	ELISA, WB
<b>Host:</b>	Rabbit
<b>Recommended dilutions:</b>	WB: 1/500 - 1/1000. Optimal dilutions/concentrations should be determined by the end user.
<b>Conjugation:</b>	Unconjugated
<b>Immunogen:</b>	Peptide sequence around phosphorylation site of serine 87 (A-L-S (p)-P-V) derived from Human BCL-2.
<b>Isotype:</b>	IgG
<b>Form:</b>	Liquid
<b>Purification:</b>	Purified by affinity chromatography using epitope-specific phosphopeptide.
<b>Storage:</b>	Aliquot and store at -20°C. Avoid repeated freeze/thaw cycles.
<b>UniProt Primary AC:</b>	P10415 ( <a href="#">UniProt</a> , <a href="#">ExPASy</a> )
<b>Buffer:</b>	PBS (without Mg <sup>2+</sup> and Ca <sup>2+</sup> ), pH 7.4, containing 150mM NaCl, 0.02% sodium azide and 50% Glycerol.
<b>Specificity:</b>	The antibody detects endogenous levels of BCL-2 only when phosphorylated at Ser87.

# Datasheet

Version: 5.0.0

Revision date: 13 Feb 2025



**Concentration:** 1 mg/ml

**Note:** This product is for research use only.

For Reference Only