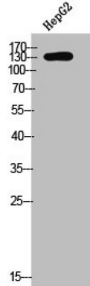


Colony Stimulating Factor 1 Receptor Phospho-Tyr561 (CSF1R pY561) Antibody

Catalogue No.: abx328202



Western blot analysis of HepG2 cell extracts using Colony Stimulating Factor 1 Receptor Phospho-Tyr561 (CSF1R pY561) Antibody.

CSF1R (pY561) Antibody is a Rabbit Polyclonal against CSF1R (pY561).

Target:	Colony Stimulating Factor 1 Receptor Phospho-Tyr561 (CSF1R pY561)
Clonality:	Polyclonal
Target Modification:	Tyr561
Modification:	Phosphorylation
Reactivity:	Human, Mouse, Rat
Tested Applications:	ELISA, WB, IHC
Host:	Rabbit
Recommended dilutions:	ELISA: 1/10000, WB: 1/500 - 1/2000, IHC: 1/100 - 1/300. Optimal dilutions/concentrations should be determined by the end user.
Conjugation:	Unconjugated
Immunogen:	Synthesized peptide derived from Human CSF1R around the phosphorylation site of Y561.
Isotype:	IgG
Form:	Liquid
Purification:	Purified by affinity chromatography.
Storage:	Aliquot and store at -20°C. Avoid repeated freeze/thaw cycles.

Datasheet

Version: 2.0.0
Revision date: 12 Mar 2025



UniProt Primary AC: P07333 ([UniProt](#), [ExPASy](#))

Gene Symbol: CSF1R

GeneID: [1436](#)

KEGG: hsa:1436

String: [9606.ENSP00000286301](#)

Buffer: PBS containing 50% glycerol, 0.5% BSA and 0.02% sodium azide.

Concentration: 1 mg/ml

Note: THIS PRODUCT IS FOR RESEARCH USE ONLY. NOT FOR USE IN DIAGNOSTIC, THERAPEUTIC OR COSMETIC PROCEDURES. NOT FOR HUMAN OR ANIMAL CONSUMPTION.

For Reference Only