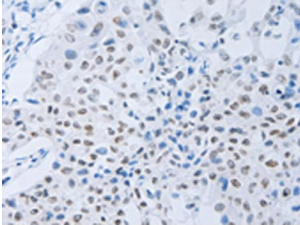


Colony Stimulating Factor 1 Receptor (CSF1R) Antibody

Catalogue No.: abx241370



IHC-P analysis of Human lung cancer tissue using Colony Stimulating Factor 1 Receptor Antibody (1/45 dilution, x200 magnification).

CSF1R Antibody is a Rabbit Polyclonal against CSF1R.

Target:	Colony Stimulating Factor 1 Receptor (CSF1R)
Clonality:	Polyclonal
Reactivity:	Human, Mouse, Rat
Tested Applications:	ELISA, IHC
Host:	Rabbit
Recommended dilutions:	ELISA: 1/2000 - 1/5000, IHC: 1/25 - 1/100. Optimal dilutions/concentrations should be determined by the end user.
Conjugation:	Unconjugated
Immunogen:	Synthetic peptide of human CSF1R.
Isotype:	IgG
Form:	Liquid
Purification:	Antigen Affinity Chromatography.
Storage:	Aliquot and store at -20°C. Avoid repeated freeze/thaw cycles.
UniProt Primary AC:	P07333 (UniProt , ExPASy)
Gene Symbol:	CSF1R
GeneID:	1436

Datasheet

Version: 2.0.0
Revision date: 27 Nov 2024



KEGG: hsa:1436

String: [9606.ENSP00000286301](#)

Buffer: PBS, pH 7.4, containing 0.05% NaN₃ and 40% Glycerol.

Concentration: 0.4 mg/ml

Note: This product is for research use only.

For Reference Only