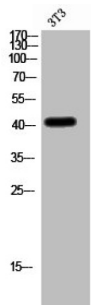


## Cell Adhesion Molecule 3 (CADM3) Antibody

Catalogue No.: abx329660



WB analysis of 3T3 cells.

CADM3 Antibody is a Rabbit Polyclonal against CADM3.

<b>Target:</b>	Cell Adhesion Molecule 3 (CADM3)
<b>Clonality:</b>	Polyclonal
<b>Reactivity:</b>	Human, Mouse, Rat
<b>Tested Applications:</b>	ELISA, WB, IHC, IF/ICC
<b>Host:</b>	Rabbit
<b>Recommended dilutions:</b>	ELISA: 1/5000, WB: 1/500 - 1/2000, IHC: 1/100 - 1/300, IF/ICC: 1/200 - 1/1000. Optimal dilutions/concentrations should be determined by the end user.
<b>Conjugation:</b>	Unconjugated
<b>Immunogen:</b>	Synthesized peptide derived from the internal region of human IGSF4B.
<b>Isotype:</b>	IgG
<b>Form:</b>	Liquid
<b>Purification:</b>	Purified by affinity chromatography.
<b>Storage:</b>	Aliquot and store at -20°C. Avoid repeated freeze/thaw cycles.
<b>UniProt Primary AC:</b>	Q8N126 ( <a href="#">UniProt</a> , <a href="#">ExPASy</a> )
<b>Gene Symbol:</b>	CADM3
<b>GeneID:</b>	<a href="#">57863</a>

# Datasheet

Version: 3.0.0  
Revision date: 14 Jan 2025



**OMIM:** [609743](#)

**NCBI Accession:** NP\_001120645.1, NM\_001127173.2

**KEGG:** hsa:57863

**String:** [9606.ENSP00000357106](#)

**Buffer:** PBS containing 50% glycerol, 0.5% BSA and 0.02% sodium azide.

**Concentration:** 1 mg/ml

**Note:** This product is for research use only.

For Reference Only