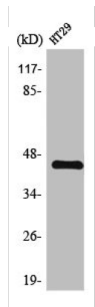
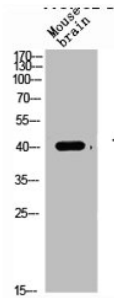


Transforming Growth Factor Beta 1 (TGFB1) Antibody

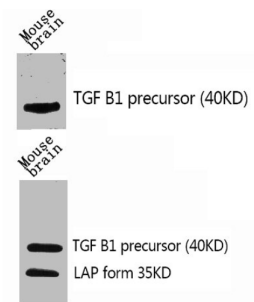
Catalogue No.: abx329389



WB analysis of HT29 cells using TGFB1 Polyclonal Antibody.



WB analysis of Mouse brain cells using TGFB1 Polyclonal Antibody.



WB analysis of Mouse brain tissue using TGFB1 polyclonal antibody.

TGFB1 Antibody is a Rabbit Polyclonal against TGFB1.

Target: Transforming Growth Factor Beta 1 (TGFB1)

Clonality: Polyclonal

Reactivity: Human, Mouse, Rat

Tested Applications: ELISA, WB, IHC, IF/ICC

Host: Rabbit

Recommended dilutions: ELISA: 1/20000, WB: 1/500 - 1/2000, IHC: 1/100 - 1/300, IF/ICC: 1/200 - 1/1000. Optimal dilutions/concentrations should be determined by the end user.

Conjugation: Unconjugated

Datasheet

Version: 4.0.0
Revision date: 13 Mar 2025



Immunogen:	Synthesized peptide derived from the C-terminal region of human TGFβ1.
Isotype:	IgG
Form:	Liquid
Purification:	Purified by affinity chromatography.
Storage:	Aliquot and store at -20°C. Avoid repeated freeze/thaw cycles.
UniProt Primary AC:	P01137 (UniProt , ExPASy)
Gene Symbol:	TGFB1
GeneID:	7040
KEGG:	hsa:7040
String:	9606.ENSP00000221930
Buffer:	PBS containing 50% glycerol, 0.5% BSA and 0.02% sodium azide.
Concentration:	1 mg/ml
Note:	THIS PRODUCT IS FOR RESEARCH USE ONLY. NOT FOR USE IN DIAGNOSTIC, THERAPEUTIC OR COSMETIC PROCEDURES. NOT FOR HUMAN OR ANIMAL CONSUMPTION.

For Reference Only