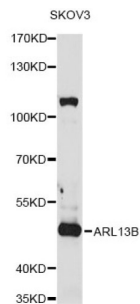


ADP-Ribosylation Factor-Like 13B (ARL13B) Antibody

Catalogue No.: abx003990



Western blot analysis of extracts of SKOV3 cells, using ARL13B antibody (abx003990) at 1/1000 dilution.

ARL13B Antibody is a Rabbit Polyclonal antibody against ARL13B. This gene encodes a member of the ADP-ribosylation factor-like family. The encoded protein is a small GTPase that contains both N-terminal and C-terminal guanine nucleotide-binding motifs. This protein is localized in the cilia and plays a role in cilia formation and in maintenance of cilia. Mutations in this gene are the cause of Joubert syndrome 8. Alternate splicing results in multiple transcript variants.

Target:	ADP-Ribosylation Factor-Like 13B (ARL13B)
Clonality:	Polyclonal
Reactivity:	Human, Mouse, Rat
Tested Applications:	WB, IF/ICC
Host:	Rabbit
Recommended dilutions:	WB: 1/500 - 1/2000, IF/ICC: 1/50 - 1/200. Optimal dilutions/concentrations should be determined by the end user.
Conjugation:	Unconjugated
Immunogen:	Recombinant fusion protein containing a sequence corresponding to amino acids 1-240 of human ARL13B.
Isotype:	IgG
Form:	Liquid
Purification:	Purified by affinity chromatography.
Storage:	Aliquot and store at -20°C. Avoid repeated freeze/thaw cycles.
UniProt Primary AC:	Q3SXY8 (UniProt , ExPASy)
Gene Symbol:	ARL13B

Datasheet

Version: 6.0.0
Revision date: 19 Oct 2024



GeneID: [200894](#)

NCBI Accession: NP_878899.1

KEGG: hsa:200894

String: [9606.ENSP00000377769](#)

Molecular Weight: Calculated MW: 49 kDa
Observed MW: 49 kDa

Buffer: PBS, pH 7.3, containing 0.01% thimerosal, 50% glycerol.

Concentration: > 0.2 mg/ml

Note: This product is for research use only.

For Reference Only