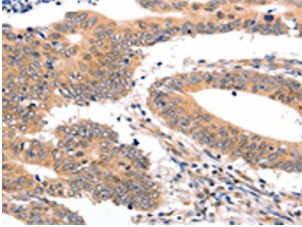


## Semaphorin 3G (SEMA3G) Antibody

Catalogue No.: abx339745



IHC-P analysis of human colon cancer tissue, using SEMA3G antibody (1/30 dilution, 200x magnification).

SEMA3G Antibody is a Rabbit Polyclonal against SEMA3G.

<b>Target:</b>	Semaphorin 3G (SEMA3G)
<b>Clonality:</b>	Polyclonal
<b>Reactivity:</b>	Human
<b>Tested Applications:</b>	ELISA, IHC
<b>Host:</b>	Rabbit
<b>Recommended dilutions:</b>	ELISA: 1/1000 - 1/5000, IHC: 1/25 - 1/100. Optimal dilutions/concentrations should be determined by the end user.
<b>Conjugation:</b>	Unconjugated
<b>Immunogen:</b>	Fusion protein of human SEMA3G.
<b>Isotype:</b>	IgG
<b>Form:</b>	Liquid
<b>Purification:</b>	Antigen Affinity Chromatography.
<b>Storage:</b>	Aliquot and store at -20°C. Avoid repeated freeze/thaw cycles.
<b>UniProt Primary AC:</b>	Q9NS98 ( <a href="#">UniProt</a> , <a href="#">ExPASy</a> )
<b>Gene Symbol:</b>	SEMA3G
<b>GeneID:</b>	<a href="#">56920</a>

# Datasheet

Version: 3.0.0  
Revision date: 24 Dec 2024



**String:** [9606.ENSF00000231721](#)

**Buffer:** PBS, pH 7.4, containing 0.05% NaN<sub>3</sub> and 40% Glycerol.

**Note:** This product is for research use only.

For Reference Only