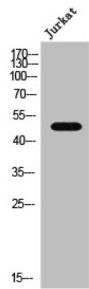


Alpha 2A Adrenergic Receptor (ADRA2A) Antibody

Catalogue No.: abx329357



WB analysis of Jurkat cells.

ADRA2A Antibody is a Rabbit Polyclonal against ADRA2A.

Target:	Alpha 2A Adrenergic Receptor (ADRA2A)
Clonality:	Polyclonal
Reactivity:	Human, Mouse, Rat
Tested Applications:	ELISA, WB, IHC, IF/ICC
Host:	Rabbit
Recommended dilutions:	ELISA: 1/20000, WB: 1/500 - 1/2000, IHC: 1/100 - 1/300, IF/ICC: 1/200 - 1/1000. Optimal dilutions/concentrations should be determined by the end user.
Conjugation:	Unconjugated
Immunogen:	Synthesized peptide derived from the C-terminal region of human AR alpha 2A.
Isotype:	IgG
Form:	Liquid
Purification:	Purified by affinity chromatography.
Storage:	Aliquot and store at -20°C. Avoid repeated freeze/thaw cycles.
UniProt Primary AC:	P08913 (UniProt , ExPASy)
Gene Symbol:	ADRA2A
GeneID:	150

Datasheet

Version: 4.0.0
Revision date: 22 Dec 2024



OMIM: [104210](#)

HGNC: 281

KEGG: hsa:150

Ensembl: ENSG00000150594

String: [9606.ENSP00000280155](#)

Buffer: PBS containing 50% glycerol, 0.5% BSA and 0.02% sodium azide.

Concentration: 1 mg/ml

Note: This product is for research use only.

For Reference Only