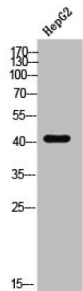


Type-1 Angiotensin II Receptor (AGTR1) Antibody

Catalogue No.: abx329254



WB analysis of HepG2 cells.

AGTR1 Antibody is a Rabbit Polyclonal against AGTR1.

Target:	Type-1 Angiotensin II Receptor (AGTR1)
Clonality:	Polyclonal
Reactivity:	Human, Mouse, Rat
Tested Applications:	ELISA, WB, IHC, IF/ICC
Host:	Rabbit
Recommended dilutions:	ELISA: 1/10000, WB: 1/500 - 1/2000, IHC: 1/100 - 1/300, IF/ICC: 1/200 - 1/1000. Optimal dilutions/concentrations should be determined by the end user.
Conjugation:	Unconjugated
Immunogen:	Synthesized peptide derived from the internal region of human AT1.
Isotype:	IgG
Form:	Liquid
Purification:	Purified by affinity chromatography.
Storage:	Aliquot and store at -20°C. Avoid repeated freeze/thaw cycles.
UniProt Primary AC:	P30556 (UniProt , ExPASy)
Gene Symbol:	AGTR1
GeneID:	185

Datasheet

Version: 3.0.0

Revision date: 15 Jan 2025



KEGG: hsa:185

String: [9606.ENSP00000419422](#)

Buffer: PBS containing 50% glycerol, 0.5% BSA and 0.02% sodium azide.

Concentration: 3 mg/ml

Note: This product is for research use only.

For Reference Only