

# Datasheet

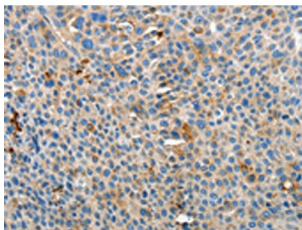
Version: 7.0.0  
Revision date: 03 Dec 2024

## Apolipoprotein H (APOH) Antibody

Catalogue No.: abx211114



WB analysis (10% SDS-PAGE) of human testis tissue (40 µg), using APOH antibody (1/500 dilution) and goat anti-rabbit IgG secondary antibody (1/8000 dilution). Exposure time: 20 seconds.



IHC-P analysis of human liver cancer tissue, using APOH antibody (1/15 dilution, 200X magnification).

APOH Antibody is a Rabbit Polyclonal against APOH.

**Target:** Apolipoprotein H (APOH)

**Clonality:** Polyclonal

**Reactivity:** Human

**Tested Applications:** ELISA, WB, IHC

**Host:** Rabbit

**Recommended dilutions:** ELISA: 1/2000 - 1/5000, WB: 1/500 - 1/2000, IHC: 1/15 - 1/50. Optimal dilutions/concentrations should be determined by the end user.

**Conjugation:** Unconjugated

**Immunogen:** Fusion protein of human APOH.

**Isotype:** IgG

**Form:** Liquid

**Purification:** Antigen Affinity Chromatography.

# Datasheet

Version: 7.0.0  
Revision date: 03 Dec 2024



**Storage:** Aliquot and store at -20°C. Avoid repeated freeze/thaw cycles.

**UniProt Primary AC:** P02749 ([UniProt](#), [ExPASy](#))

**Gene Symbol:** APOH

**GeneID:** [350](#)

**KEGG:** hsa:350

**String:** [9606.ENSP00000205948](#)

**Buffer:** PBS, pH 7.4, containing 0.05% NaN<sub>3</sub> and 40% Glycerol.

**Concentration:** 1.1 mg/ml

**Note:** This product is for research use only.

For Reference Only