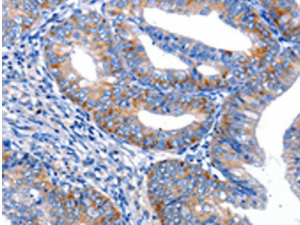
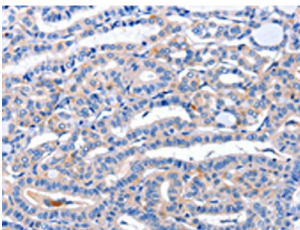


## Androgen Receptor (AR) Antibody

Catalogue No.: abx339753



IHC-P analysis of Human cervical cancer tissue, using AR antibody at 1/20 dilution, x200 magnification.



IHC-P analysis of Human thyroid tissue, using AR antibody at 1/20 dilution, x200 magnification.

AR Antibody is a Rabbit Polyclonal against AR.

<b>Target:</b>	Androgen Receptor (AR)
<b>Clonality:</b>	Polyclonal
<b>Reactivity:</b>	Human
<b>Tested Applications:</b>	ELISA, IHC
<b>Host:</b>	Rabbit
<b>Recommended dilutions:</b>	ELISA: 1/1000 - 1/5000, IHC: 1/25 - 1/100. Optimal dilutions/concentrations should be determined by the end user.
<b>Conjugation:</b>	Unconjugated
<b>Immunogen:</b>	Synthetic peptide of human AR.
<b>Isotype:</b>	IgG
<b>Form:</b>	Liquid
<b>Purification:</b>	Antigen Affinity Chromatography.

# Datasheet

Version: 1.0.0  
Revision date: 12 Dec 2024



**Storage:** Aliquot and store at -20°C. Avoid repeated freeze/thaw cycles.

**UniProt Primary AC:** P10275 ([UniProt](#), [ExPASy](#))

**Gene Symbol:** AR

**GeneID:** [367](#)

**KEGG:** hsa:367

**String:** [9606.ENSP00000363822](#)

**Buffer:** PBS, pH 7.4, containing 0.05% NaN<sub>3</sub> and 40% Glycerol.

**Concentration:** 1 mg/ml

**Note:** This product is for research use only.

For Reference Only