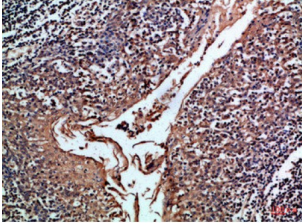
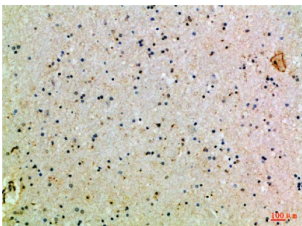


## Cluster of Differentiation 24 (CD24) Antibody

Catalogue No.: abx323210



IHC-P analysis of human tonsil tissue, using CD24 antibody (1/100 dilution).



IHC-P analysis of human brain tissue, using CD24 antibody (1/100 dilution).

CD24 Antibody is a Rabbit Polyclonal against CD24.

<b>Target:</b>	Cluster of Differentiation 24 (CD24)
<b>Clonality:</b>	Polyclonal
<b>Reactivity:</b>	Human
<b>Tested Applications:</b>	ELISA, IHC
<b>Host:</b>	Rabbit
<b>Recommended dilutions:</b>	ELISA: 1/10000 - 1/20000, IHC: 1/50 - 1/300. Optimal dilutions/concentrations should be determined by the end user.
<b>Conjugation:</b>	Unconjugated
<b>Immunogen:</b>	Synthetic peptide derived from human CD24 (30-60 AA).
<b>Isotype:</b>	IgG
<b>Form:</b>	Liquid
<b>Purification:</b>	Purified by affinity chromatography.

# Datasheet

Version: 5.0.0  
Revision date: 12 Mar 2025



**Storage:** Aliquot and store at -20°C. Avoid repeated freeze/thaw cycles.

**UniProt Primary AC:** P25063 ([UniProt](#), [ExPASy](#))

**Gene Symbol:** CD24

**GeneID:** [100133941](#)

**KEGG:** hsa:100133941

**String:** [9606.ENSP00000483985](#)

**Buffer:** PBS, pH 7.4, containing 0.02% sodium azide and 50% glycerol.

**Concentration:** 1 mg/ml

**Note:** THIS PRODUCT IS FOR RESEARCH USE ONLY. NOT FOR USE IN DIAGNOSTIC, THERAPEUTIC OR COSMETIC PROCEDURES. NOT FOR HUMAN OR ANIMAL CONSUMPTION.

For Reference Only