

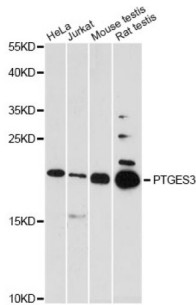
Datasheet

Version: 3.0.0
Revision date: 19 Jan 2025



Prostaglandin E Synthase 3 (PTGES3) Antibody

Catalogue No.: abx004071



Western blot analysis of extracts of various cell lines, using PTGES3 antibody (abx004071) at 1/1000 dilution.

PTGES3 Antibody is a Rabbit Polyclonal antibody against PTGES3.

Target: Prostaglandin E Synthase 3 (PTGES3)

Clonality: Polyclonal

Reactivity: Human, Mouse, Rat

Tested Applications: WB

Host: Rabbit

Recommended dilutions: WB: 1/500 - 1/2000. Optimal dilutions/concentrations should be determined by the end user.

Conjugation: Unconjugated

Immunogen: A synthetic peptide corresponding to a sequence within amino acids 1-100 of human P23/P23/PTGES3.

Isotype: IgG

Form: Liquid

Purification: Purified by affinity chromatography.

Storage: Aliquot and store at -20°C. Avoid repeated freeze/thaw cycles.

UniProt Primary AC: Q15185 ([UniProt](#), [ExPASy](#))

Gene Symbol: PTGES3

GeneID: [10728](#)

Datasheet

Version: 3.0.0
Revision date: 19 Jan 2025



NCBI Accession: NP_006592.3

KEGG: hsa:10728

String: [9606.ENSP00000482075](#)

Molecular Weight: Calculated MW: 19 kDa
Observed MW: 23 kDa

Buffer: PBS, pH 7.3, containing 0.01% thimerosal, 50% glycerol.

Concentration: > 0.2 mg/ml

Note: This product is for research use only.

For Reference Only