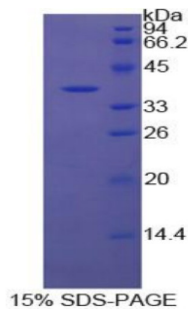


Cow Apolipoprotein H (APOH) Protein

Catalogue No.: abx065434



SDS-PAGE analysis of Cow Apolipoprotein H Protein.

Recombinant Apolipoprotein H (APOH) is a recombinant Cow protein produced in a Prokaryotic expression system (E. coli).

Target: Apolipoprotein H (APOH)**Origin:** Cow**Expression:** Recombinant**Tested Applications:** WB, SDS-PAGE**Host:** E. coli**Conjugation:** Unconjugated**Form:** Lyophilized**Purity:** > 95%**Reconstitution:** To keep the original salt concentration, we recommend reconstituting to the original concentration prior to lyophilization (see Concentration) in ddH₂O. If a lower concentration is required, dilute in PBS, pH 7.4. If a higher concentration is required, the product can be reconstituted directly in PBS, pH 7.4, though please note that this will change the overall salt concentration. The stock concentration should be between 0.1-1.0 mg/ml. Do not vortex.**Storage:** Store at 2-8 °C for up to one month. Store at -80 °C for up to one year. Avoid repeated freeze/thaw cycles.**UniProt Primary AC:** P17690 ([UniProt](#), [ExPASy](#))**KEGG:** bta:281006**String:** [9913.ENSBTAP00000002492](https://pubmed.ncbi.nlm.nih.gov/31111111/)

Datasheet

Version: 2.0.0
Revision date: 23 Feb 2025



Molecular Weight: Calculated MW: 37.8 kDa

Sequence Fragment: Arg21-Cys345

Sequence: RTCPKPDELP FSTVVPLKRT YEPGEQIVFS CQPGYVSRGG IRRFTCPLTG LWPINTLKCM
PRVCPFAGI
L ENGTVRYTTF EYPNTISFSC HTGFYLK GAS SAKCTEEGKW SPDLPVCAPI TCPPPPPIPKF
ASLSVYK
PLA GNNSFYGSKA VFKCLPHHAM FGNDTVTCTE HGNWTQLPEC REVRCPFPSR PDNGFVNHPA
NPVLY
YKDTA TFGCHETYSL DGPEEVECSK FGNWSAQPSC KASCKLSIKR ATVIYEGERV AIONKFKNGM
LHG
QKVSFFC KHKEKKCSYT EDAQCIDGTI EIPKCFKEHS SLAFWKTDAS DVKPC

Tag: N-terminal His tag

Buffer: Prior to lyophilization: PBS, pH 7.4, containing 0.01% Sarcosyl, 1 mM DTT, 5% Trehalose and Proclin-300.

Activity: Not tested

Concentration: Prior to lyophilization: 200 µg/ml

Note: This product is for research use only.
Not for human consumption, cosmetic, therapeutic or diagnostic use.

For Reference Only