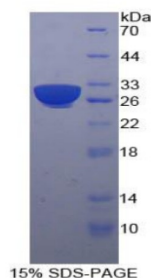


## Human B-Cell Linker Protein (BLNK) Protein

Catalogue No.: abx065515



SDS-PAGE analysis of Human B-Cell Linker Protein.

Recombinant B-Cell Linker Protein (BLNK) is a recombinant Human protein produced in a Prokaryotic expression system (E. coli).

**Target:** B-Cell Linker Protein (BLNK)

**Origin:** Human

**Expression:** Recombinant

**Tested Applications:** WB, SDS-PAGE

**Host:** E. coli

**Conjugation:** Unconjugated

**Form:** Lyophilized

**Purity:** > 95%

**Reconstitution:** To keep the original salt concentration, we recommend reconstituting to the original concentration prior to lyophilization (see Concentration) in ddH<sub>2</sub>O. If a lower concentration is required, dilute in PBS, pH 7.4. If a higher concentration is required, the product can be reconstituted directly in PBS, pH 7.4, though please note that this will change the overall salt concentration. The stock concentration should be between 0.1-1.0 mg/ml. Do not vortex.

**Storage:** Store at 2-8 °C for up to one month. Store at -80 °C for up to one year. Avoid repeated freeze/thaw cycles.

**UniProt Primary AC:** Q8WV28 ([UniProt](#), [ExPASy](#))

**KEGG:** hsa:29760

**String:** [9606.ENSP00000224337](#)

# Datasheet

Version: 2.0.0  
Revision date: 27 Dec 2024



**Molecular Weight:** Calculated MW: 31.1 kDa

**Sequence Fragment:** Ser65-Thr314

**Sequence:** SDDFDS DYENPDEHSD SEMYVMPAAE NADDSYEPPP VEQETRPVHP ALPFARGEYI  
DNRSSQRHSP PF  
SKTLPSKP SWPSEKARLT STLPALTALQ KPQVPPKPKG LLEDEADYVW PVEDNDENYI  
HPTESSPPP  
EKAPMVNRST KPNSSTPASP PGTASGRNSG AWETKSPPPA APSPLPRAGK KPTTPLKTTT  
VASQQNASS  
V CEEKPIPAER HRGSSHRQEA VQSPVFPPAQ KQIHQKPIPL PRFT

**Tag:** N-terminal His tag

**Buffer:** Prior to lyophilization: PBS, pH 7.4, containing 0.01% Sarcosyl, 1 mM DTT, 5% Trehalose and Proclin-300.

**Activity:** Not tested

**Concentration:** Prior to lyophilization: 200 µg/ml

**Note:** This product is for research use only.  
Not for human consumption, cosmetic, therapeutic or diagnostic use.

For Reference Only