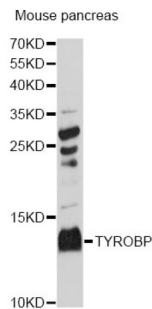


TYRO Protein Tyrosine Kinase Binding Protein (TYROBP) Antibody

Catalogue No.: abx004123



Western blot analysis of extracts of mouse pancreas, using TYROBP Antibody (abx004123) at 1:3000 dilution.

TYROBP Antibody is a Rabbit Polyclonal antibody against TYROBP. This gene encodes a transmembrane signaling polypeptide which contains an immunoreceptor tyrosine-based activation motif (ITAM) in its cytoplasmic domain. The encoded protein may associate with the killer-cell inhibitory receptor (KIR) family of membrane glycoproteins and may act as an activating signal transduction element. This protein may bind zeta-chain (TCR) associated protein kinase 70kDa (ZAP-70) and spleen tyrosine kinase (SYK) and play a role in signal transduction, bone modeling, brain myelination, and inflammation. Mutations within this gene have been associated with polycystic lipomembranous osteodysplasia with sclerosing leukoencephalopathy (PLOSL), also known as Nasu-Hakola disease. Its putative receptor, triggering receptor expressed on myeloid cells 2 (TREM2), also causes PLOSL. Multiple alternative transcript variants encoding distinct isoforms have been identified for this gene.

Target:	TYRO Protein Tyrosine Kinase Binding Protein (TYROBP)
Clonality:	Polyclonal
Reactivity:	Mouse, Rat
Tested Applications:	ELISA
Host:	Rabbit
Recommended dilutions:	Optimal dilutions/concentrations should be determined by the end user.
Conjugation:	Unconjugated
Immunogen:	Recombinant fusion protein containing a sequence corresponding to amino acids 1-113 of human TYROBP.
Isotype:	IgG
Form:	Liquid
Purification:	Purified by affinity chromatography.
Storage:	Aliquot and store at -20°C. Avoid repeated freeze/thaw cycles.

Datasheet

Version: 3.0.0
Revision date: 06 Sep 2024



UniProt Primary AC: O43914 ([UniProt](#), [ExpASY](#))

Gene Symbol: TYROBP

GeneID: [7305](#)

NCBI Accession: NP_003323.1

KEGG: hsa:7305

String: [9606.ENSP00000262629](#)

Molecular Weight: Calculated MW: 12 kDa

Buffer: PBS, pH 7.3, containing 0.02% sodium azide, 50% glycerol.

Concentration: > 0.2 mg/ml

Note: This product is for research use only.

For Reference Only