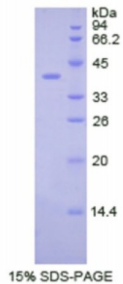


Human Colony Stimulating Factor 2 Receptor Beta (CSF2Rb) Protein

Catalogue No.: abx066031



SDS-PAGE analysis of Human CSF2Rb Protein.

Recombinant Colony Stimulating Factor 2 Receptor Beta (CSF2Rb) is a recombinant Human protein produced in a Prokaryotic expression system (E. coli).

Target:	Colony Stimulating Factor 2 Receptor Beta (CSF2Rb)
Origin:	Human
Expression:	Recombinant
Tested Applications:	WB, SDS-PAGE
Host:	E. coli
Conjugation:	Unconjugated
Form:	Lyophilized
Purity:	> 95%
Reconstitution:	To keep the original salt concentration, we recommend reconstituting to the original concentration prior to lyophilization (see Concentration) in ddH ₂ O. If a lower concentration is required, dilute in PBS, pH 7.4. If a higher concentration is required, the product can be reconstituted directly in PBS, pH 7.4, though please note that this will change the overall salt concentration. The stock concentration should be between 0.1-1.0 mg/ml. Do not vortex.
Storage:	Store at 2-8 °C for up to one month. Store at -80 °C for up to one year. Avoid repeated freeze/thaw cycles.
UniProt Primary AC:	P32927 (UniProt , ExPASy)
KEGG:	hsa:1439
String:	9606.ENSP00000384053

Datasheet

Version: 3.0.0
Revision date: 11 Feb 2025



Molecular Weight: Calculated MW: 38.3 kDa

Sequence Fragment: Pro133-Val233

Sequence: PPEPRDLQ ISTDQDHFLL TWSVALGSPQ SHWLSPGDLE FEVVYKRLQD SWEDAAILLS
NTSQATLGPE
HLMPSSSTYVA RVRTRLAPGS RLSGRPSKWS PEV

Tag: N-terminal His tag and GST tag

Buffer: Prior to lyophilization: PBS, pH 7.4, containing 0.01% Sarcosyl, 1 mM DTT, 5% Trehalose and Proclin-300.

Activity: Not tested

Concentration: Prior to lyophilization: 200 µg/ml

Note: This product is for research use only.
Not for human consumption, cosmetic, therapeutic or diagnostic use.

For Reference Only