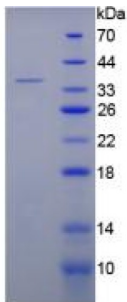


Rat Complement C5a (C5a) Protein

Catalogue No.: abx066061



SDS-PAGE analysis of Rat C5a Protein.

Recombinant Complement Component 5a (C5a) is a recombinant Rat protein produced in a Prokaryotic expression system (E. coli).

Target: Complement C5a (C5a)**Origin:** Rat**Expression:** Recombinant**Tested Applications:** WB, SDS-PAGE**Host:** E. coli**Conjugation:** Unconjugated**Form:** Lyophilized**Purity:** > 90%**Reconstitution:** To keep the original salt concentration, we recommend reconstituting to the original concentration prior to lyophilization (see Concentration) in ddH₂O. If a lower concentration is required, dilute in PBS, pH 7.4. If a higher concentration is required, the product can be reconstituted directly in PBS, pH 7.4, though please note that this will change the overall salt concentration. The stock concentration should be between 0.1-1.0 mg/ml. Do not vortex.**Storage:** Store at 2-8 °C for up to one month. Store at -80 °C for up to one year. Avoid repeated freeze/thaw cycles.**UniProt Primary AC:** P08650 ([UniProt](#), [ExPASy](#))**String:** [10116.ENSRNOP00000025534](#)**Molecular Weight:** Calculated MW: 36.1 kDa
Observed MW (SDS-PAGE): 36 kDa

Datasheet

Version: 2.0.0
Revision date: 23 Feb 2025



Sequence Fragment: Gln12-Ile64

Sequence: QAAKYKHRV PPKCCYDGAR ENKYETCEQR VARVTIGPHC IRAFNECCTI ADKI

Tag: N-terminal His tag and GST tag

Buffer: Prior to lyophilization: PBS, pH 7.4, containing 0.01% Sarcosyl, 1 mM DTT, 5% Trehalose and Proclin-300.

Activity: Not tested

Concentration: Prior to lyophilization: 200 µg/ml

Note: This product is for research use only.
Not for human consumption, cosmetic, therapeutic or diagnostic use.

For Reference Only