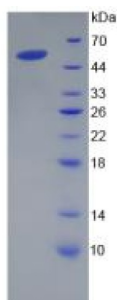


Human Atrial Natriuretic Peptide-Converting Enzyme (CORIN) Protein

Catalogue No.: abx066119



SDS-PAGE analysis of recombinant Human CORIN Protein.

Human Atrial Natriuretic Peptide-Converting Enzyme (CORIN) is a recombinant Human protein produced in a Prokaryotic expression system (*E. coli*).

This protein is the immunogen for the following antibodies: [abx100003](#)

Target:	Atrial Natriuretic Peptide-Converting Enzyme (CORIN)
Origin:	Human
Expression:	Recombinant
Tested Applications:	WB, SDS-PAGE
Host:	<i>E. coli</i>
Conjugation:	Unconjugated
Form:	Lyophilized
Purity:	> 90%
Reconstitution:	To keep the original salt concentration, we recommend reconstituting to the original concentration prior to lyophilization (see Concentration) in ddH ₂ O. If a lower concentration is required, dilute in 20 mM Tris, 150 mM NaCl, pH 8.0. If a higher concentration is required, the product can be reconstituted directly in 20 mM Tris, 150 mM NaCl, pH 8.0, though please note that this will change the overall salt concentration. The stock concentration should be between 0.1-1.0 mg/ml. Do not vortex.
Storage:	Store at 2-8 °C for up to one month. Store at -80 °C for up to one year. Avoid repeated freeze/thaw cycles.
UniProt Primary AC:	Q9Y5Q5 (UniProt , ExpASY)
Gene Symbol:	CORIN

Datasheet

Version: 1.0.0
Revision date: 11 Apr 2025



GeneID: [10699](#)

OMIM: [605236](#)

HGNC: 19012

Ensembl: ENSG00000145244

String: [9606.ENSP00000273857](#)

Molecular Weight: Calculated MW: 53.1 kDa
Observed MW (SDS-PAGE): 53 kDa

Sequence Fragment: Arg134-Pro573

Tag: N-terminal His tag

Buffer: Prior to lyophilization: 20 mM Tris, 150 mM NaCl, pH 8.0, containing 1 mM EDTA, 1 mM DTT, 0.01% Sarcosyl, 5% Trehalose and Proclin-300.

Activity: Not tested

Concentration: Prior to lyophilization: 200 µg/ml

Note: THIS PRODUCT IS FOR RESEARCH USE ONLY. NOT FOR USE IN DIAGNOSTIC, THERAPEUTIC OR COSMETIC PROCEDURES. NOT FOR HUMAN OR ANIMAL CONSUMPTION.

For Reference Only