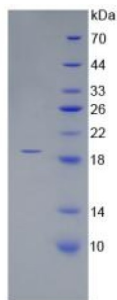


## Human Atrial Natriuretic Peptide-Converting Enzyme (CORIN) Protein

Catalogue No.: abx066123



SDS-PAGE analysis of recombinant Human CORIN Protein.

Human Atrial Natriuretic Peptide-Converting Enzyme (CORIN) is a recombinant Human protein produced in a Prokaryotic expression system (*E. coli*).

This protein is the immunogen for the following antibodies: [abx100002](#)

<b>Target:</b>	Atrial Natriuretic Peptide-Converting Enzyme (CORIN)
<b>Origin:</b>	Human
<b>Expression:</b>	Recombinant
<b>Tested Applications:</b>	WB, SDS-PAGE
<b>Host:</b>	<i>E. coli</i>
<b>Conjugation:</b>	Unconjugated
<b>Form:</b>	Lyophilized
<b>Purity:</b>	> 95%
<b>Reconstitution:</b>	To keep the original salt concentration, we recommend reconstituting to the original concentration prior to lyophilization (see Concentration) in ddH <sub>2</sub> O. If a lower concentration is required, dilute in 20 mM Tris, 150 mM NaCl, pH 8.0. If a higher concentration is required, the product can be reconstituted directly in 20 mM Tris, 150 mM NaCl, pH 8.0, though please note that this will change the overall salt concentration. The stock concentration should be between 0.1-1.0 mg/ml. Do not vortex.
<b>Storage:</b>	Store at 2-8 °C for up to one month. Store at -80 °C for up to one year. Avoid repeated freeze/thaw cycles.
<b>UniProt Primary AC:</b>	Q9Y5Q5 ( <a href="#">UniProt</a> , <a href="#">ExPASy</a> )
<b>Gene Symbol:</b>	CORIN

# Datasheet

Version: 1.0.0  
Revision date: 11 Apr 2025



**GeneID:** [10699](#)

**OMIM:** [605236](#)

**HGNC:** 19012

**Ensembl:** ENSG00000145244

**String:** [9606.ENSP00000273857](#)

**Molecular Weight:** Calculated MW: 18.9 kDa  
Observed MW (SDS-PAGE): 19 kDa

**Sequence Fragment:** Ser448-Glu579

**Sequence:** SLN NCSQCEPITL ELCMNLPYNS TSYPNYFGHR TQKEASISWE SSLFPALVQT NCYKYL MFFS  
CTILVPKCDV NTGEHIPPCR ALCEHSKERC ESVLGIVGLQ WPEDTDCSQF PEENSDNQTC  
LMPDEYVEE

**Tag:** N-terminal His tag

**Buffer:** Prior to lyophilization: 20 mM Tris, 150 mM NaCl, pH 8.0, containing 1 mM EDTA, 1 mM DTT, 0.01% Sarcosyl, 5% Trehalose and Proclin-300.

**Activity:** Not tested

**Concentration:** Prior to lyophilization: 200 µg/ml

**Note:** THIS PRODUCT IS FOR RESEARCH USE ONLY. NOT FOR USE IN DIAGNOSTIC, THERAPEUTIC OR COSMETIC PROCEDURES. NOT FOR HUMAN OR ANIMAL CONSUMPTION.

For Reference Only