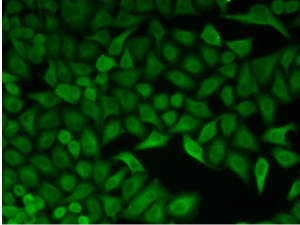


Cell Division Cycle 34 (CDC34) Antibody

Catalogue No.: abx004178



Immunofluorescence analysis of HeLa cells using CDC34 Antibody

CDC34 Antibody is a Rabbit Polyclonal antibody against CDC34. The protein encoded by this gene is a member of the ubiquitin-conjugating enzyme family. Ubiquitin-conjugating enzyme catalyzes the covalent attachment of ubiquitin to other proteins. This protein is a part of the large multiprotein complex, which is required for ubiquitin-mediated degradation of cell cycle G1 regulators, and for the initiation of DNA replication.

Target:	Cell Division Cycle 34 (CDC34)
Clonality:	Polyclonal
Reactivity:	Human, Mouse, Rat
Tested Applications:	IF/ICC
Host:	Rabbit
Recommended dilutions:	IF/ICC: 1/50 - 1/200. Optimal dilutions/concentrations should be determined by the end user.
Conjugation:	Unconjugated
Immunogen:	Recombinant fusion protein corresponding to human CDC34
Isotype:	IgG
Form:	Liquid
Purification:	Purified by affinity chromatography.
Storage:	Aliquot and store at -20°C. Avoid repeated freeze/thaw cycles.
UniProt Primary AC:	P49427 (UniProt , ExPASy)
Gene Symbol:	CDC34

Datasheet

Version: 4.0.0
Revision date: 16 Feb 2025



GeneID: [997](#)

NCBI Accession: NP_004350.1

KEGG: hsa:997

String: [9606.ENSP00000215574](#)

Buffer: PBS, pH 7.3, containing 0.02% sodium azide, 50% glycerol.

Concentration: 1 mg/ml

Note: This product is for research use only.

For Reference Only