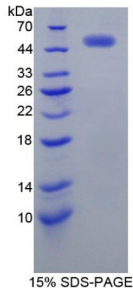


## Human Receptor Tyrosine-Protein Kinase ErbB-2 (ERBB2) Protein

Catalogue No.: abx066444



SDS-PAGE analysis of Human EGFR2 Protein.

Human Receptor Tyrosine-Protein Kinase ErbB-2 (ERBB2) Protein is a recombinant Human protein produced in a Prokaryotic expression system (E. coli).

<b>Target:</b>	Receptor Tyrosine-Protein Kinase ErbB-2 (ERBB2)
<b>Origin:</b>	Human
<b>Expression:</b>	Recombinant
<b>Tested Applications:</b>	WB, SDS-PAGE
<b>Host:</b>	E. coli
<b>Conjugation:</b>	Unconjugated
<b>Form:</b>	Lyophilized
<b>Purity:</b>	> 95%
<b>Reconstitution:</b>	To keep the original salt concentration, we recommend reconstituting to the original concentration prior to lyophilization (see Concentration) in ddH <sub>2</sub> O. If a lower concentration is required, dilute in PBS, pH 7.4. If a higher concentration is required, the product can be reconstituted directly in PBS, pH 7.4, though please note that this will change the overall salt concentration. The stock concentration should be between 0.1-1.0 mg/ml. Do not vortex.
<b>Storage:</b>	Store at 2-8 °C for up to one month. Store at -80 °C for up to one year. Avoid repeated freeze/thaw cycles.
<b>UniProt Primary AC:</b>	P04626 ( <a href="#">UniProt</a> , <a href="#">ExPASy</a> )
<b>KEGG:</b>	hsa:2064
<b>String:</b>	<a href="#">9606.ENSP00000269571</a>

# Datasheet

Version: 2.0.0  
Revision date: 14 Oct 2024



**Molecular Weight:** Calculated MW: 52.6 kDa  
Observed MW (SDS-PAGE): 54 kDa

**Sequence Fragment:** Phe376-Gly578

**Sequence:** FLPES FDGPASNTA PLQPEQLQVF ETLEEITGYL YISAWPDSLP DLSVFQNLQV IRGRILHNGA  
YSL  
TLQGLGI SWLGLRSLRE LGSGLALIIH NTHLCFVHTV PWDQLFRNPH QALLHTANRP  
EDECVGEGLA C  
HQLCARGHC WPGGPTQCVN CSQFLRGQEC VEECRVLQGL PREYVNARHC LPCHPECQPQ  
NGSVTCFG

**Tag:** N-terminal His tag and GST tag

**Buffer:** Prior to lyophilization: PBS, pH 7.4, containing 0.01% Sarcosyl, 1 mM DTT, 5% Trehalose and Proclin-300.

**Activity:** Not tested

**Concentration:** Prior to lyophilization: 200 µg/ml

**Note:** This product is for research use only.  
Not for human consumption, cosmetic, therapeutic or diagnostic use.

For Reference Only