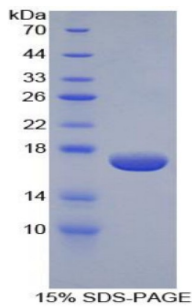


Datasheet

Version: 1.0.0
Revision date: 29 Mar 2025

Human Epsin 1 (EPN1) Protein

Catalogue No.: abx066455



SDS-PAGE analysis of Human Epsin 1 Protein.

Recombinant Epsin 1 (EPN1) is a recombinant Human protein produced in a Prokaryotic expression system (E. coli).

Target: Epsin 1 (EPN1)

Origin: Human

Expression: Recombinant

Tested Applications: WB, SDS-PAGE

Host: E. coli

Conjugation: Unconjugated

Form: Lyophilized

Purity: > 95%

Reconstitution: To keep the original salt concentration, we recommend reconstituting to the original concentration prior to lyophilization (see Concentration) in ddH₂O. If a lower concentration is required, dilute in PBS, pH 7.4. If a higher concentration is required, the product can be reconstituted directly in PBS, pH 7.4, though please note that this will change the overall salt concentration. The stock concentration should be between 0.1-1.0 mg/ml. Do not vortex.

Storage: Store at 2-8 °C for up to one month. Store at -80 °C for up to one year. Avoid repeated freeze/thaw cycles.

UniProt Primary AC: Q9Y6I3 ([UniProt](#), [ExPASy](#))

String: [9606.ENSP00000406209](#)

Molecular Weight: Calculated MW: 16.6 kDa
Observed MW (SDS-PAGE): 41 kDa

Datasheet

Version: 1.0.0
Revision date: 29 Mar 2025



Sequence Fragment: Pro279-Gly437

Sequence: PA PMAAAVPTAA PTSDPWGGPP VPPAADPWGG PAPTPASGDP WRPAAPAGPS VDPWGGTPAP
AAGEGP
TPDP WGSSDGGVPV SGPSASDPWT PAPA FSDPWG GSPAKPSTNG TTAAGGFDTE
PDEFSDFDRL RTAL
PTSGSS AGELELLAGE VPARSPG

Tag: N-terminal His tag

Buffer: Prior to lyophilization: PBS, pH 7.4, containing 0.01% Sarcosyl, 1 mM DTT, 5% Trehalose and Proclin-300.

Activity: Not tested

Concentration: Prior to lyophilization: 200 µg/ml

Note: THIS PRODUCT IS FOR RESEARCH USE ONLY. NOT FOR USE IN DIAGNOSTIC, THERAPEUTIC OR COSMETIC PROCEDURES. NOT FOR HUMAN OR ANIMAL CONSUMPTION.

For Reference Only