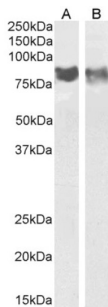


Datasheet

Version: 1.0.0
Revision date: 22 Dec 2024

Platelet And Endothelial Cell Adhesion Molecule 1 (PECAM1) Antibody

Catalogue No.: abx433504



abx433504 (0.5 µg/ml) staining of Mouse (A) and Rat (B) Spleen lysate (35 µg protein in RIPA buffer). Detected by chemiluminescence.

Platelet And Endothelial Cell Adhesion Molecule 1 (PECAM1) Antibody is a Goat Polyclonal Antibody against Platelet And Endothelial Cell Adhesion Molecule 1 (PECAM1).

Target: Platelet And Endothelial Cell Adhesion Molecule 1 (PECAM1)

Clonality: Polyclonal

Reactivity: Mouse, Rat

Tested Applications: P-ELISA, WB

Host: Goat

Recommended dilutions: P-ELISA: 1/128000. Optimal dilutions/concentrations should be determined by the end user.

Conjugation: Unconjugated

Immunogen: [abx617270](#) - Internal region: C-EKTTIEYEVK^{VH}

Isotype: IgG

Form: Liquid

Purification: Purified from goat serum by ammonium sulphate precipitation followed by antigen affinity chromatography using the immunizing peptide.

Storage: Aliquot and store at -20°C. Avoid repeated freeze/thaw cycles.

Gene Symbol: PECAM1

GeneID: [18613](#)

Datasheet

Version: 1.0.0
Revision date: 22 Dec 2024



NCBI Accession: NP_032842.2, NP_001027550.1

Buffer: Tris saline, pH 7.3, containing 0.02% sodium azide and 0.5% bovine serum albumin.

Concentration: 0.5 mg/ml

Note: This product is for research use only.

For Reference Only