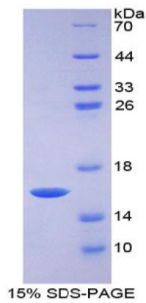
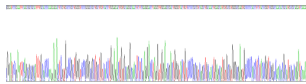


Rat Growth Differentiation Factor 15 (GDF15) Protein

Catalogue No.: abx066942



SDS-PAGE analysis of recombinant Rat GDF15 Protein.



Gene sequencing extract of recombinant Rat GDF15 Protein.

Rat Growth Differentiation Factor 15 (GDF15) Protein is a recombinant Rat protein produced in a Prokaryotic expression system (E. coli).

This protein is the immunogen for the following antibodies: [abx103433](#)

Target:	Growth Differentiation Factor 15 (GDF15)
Origin:	Rat
Expression:	Recombinant
Tested Applications:	WB, SDS-PAGE
Host:	E. coli
Conjugation:	Unconjugated
Form:	Lyophilized
Purity:	> 97%
Reconstitution:	Reconstitute in ddH ₂ O to a concentration of 0.1-1.0 mg/ml. Do not vortex.

Datasheet

Version: 4.0.0
Revision date: 05 Jan 2025



Storage: Store at 2-8 °C for up to one month. Store at -80 °C for up to one year. Avoid repeated freeze/thaw cycles.

UniProt Primary AC: Q9Z0J6 ([UniProt](#), [ExPASy](#))

String: [10116.ENSRNOP00000026652](#)

Molecular Weight: Calculated MW: 13.8 kDa
Observed MW (SDS-PAGE): 16 kDa

Sequence Fragment: Ser189-Ala303

Sequence: SA HLHPRDSCPL GPGRCCCHLET VQATLEDLGW SDWVLSRQL QLSMCVGECF HLYRSANTHA
LIKARL
HGLQ PDRVPAPCCV PSSYTPVVLM HRTDSGVSLQ TYDDLVAQGC HCA

Tag: N-terminal His tag

Buffer: Prior to lyophilization: PBS, pH 7.4, containing 0.01% Sarcosyl, 5% Trehalose.

Activity: Not tested

Concentration: Prior to lyophilization: 1200 µg/ml

Note: This product is for research use only.
Not for human consumption, cosmetic, therapeutic or diagnostic use.

For Reference Only