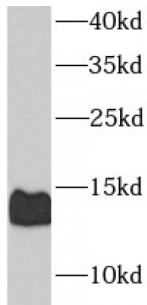
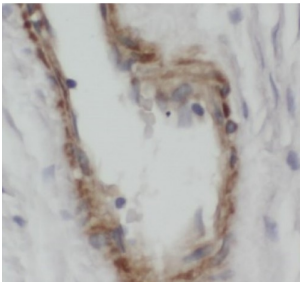


Calcitonin Gene Related Peptide 2 / CGRP2 (CALCB) Antibody

Catalogue No.: abx239834



WB analysis of Jurkat cells, using CGRP-II antibody (1/1000 dilution).



IHC-P analysis of human breast cancer tissue, using CGRP-II antibody at dilution 1/100 dilution).

Calcitonin Gene Related Peptide 2 (CGRP2) Antibody is a Rabbit Polyclonal antibody against Calcitonin Gene Related Peptide 2 (CGRP2).

Target: Calcitonin Gene Related Peptide 2 / CGRP2 (CALCB)

Clonality: Polyclonal

Reactivity: Human, Mouse, Rat

Tested Applications: ELISA, WB, IHC

Host: Rabbit

Recommended dilutions: WB: 1/500 - 1/2000, IHC: 1/50 - 1/100. Optimal dilutions/concentrations should be determined by the end user.

Conjugation: Unconjugated

Immunogen: Calcitonin gene-related peptide 2 protein

Isotype: IgG

Form: Liquid

Datasheet

Version: 1.0.0
Revision date: 01 Sep 2024

Purity:	≥ 95% (SDS-PAGE)
Purification:	Purified by immunogen affinity chromatography.
Storage:	Aliquot and store at -20°C. Avoid repeated freeze/thaw cycles.
Validity:	12 months.
UniProt Primary AC:	P10092 (UniProt , ExPASy)
KEGG:	hsa:797
String:	9606.ENSP00000433490
Molecular Weight:	Observed MW: 14 kDa
Buffer:	PBS, pH 7.3, with 0.02% sodium azide and 50% glycerol.
Concentration:	2 mg/ml
Note:	This product is for research use only.

For Reference Only