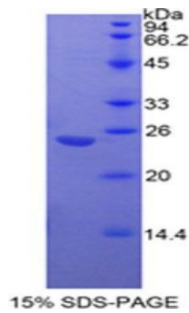


## Mouse Insulin Like Growth Factor Binding Protein 7 (IGFBP7) Protein

Catalogue No.: abx067261



SDS-PAGE analysis of Mouse Insulin Like Growth Factor Binding Protein 7 (IGFBP7) Protein.

Recombinant Insulin Like Growth Factor Binding Protein 7 (IGFBP7) is a recombinant Mouse protein produced in a Prokaryotic expression system (E. coli).

<b>Target:</b>	Insulin Like Growth Factor Binding Protein 7 (IGFBP7)
<b>Origin:</b>	Mouse
<b>Expression:</b>	Recombinant
<b>Tested Applications:</b>	WB, SDS-PAGE
<b>Host:</b>	E. coli
<b>Conjugation:</b>	Unconjugated
<b>Form:</b>	Lyophilized
<b>Purity:</b>	> 95%
<b>Reconstitution:</b>	To keep the original salt concentration, we recommend reconstituting to the original concentration prior to lyophilization (see Concentration) in ddH <sub>2</sub> O. If a lower concentration is required, dilute in PBS, pH 7.4. If a higher concentration is required, the product can be reconstituted directly in PBS, pH 7.4, though please note that this will change the overall salt concentration. The stock concentration should be between 0.1-1.0 mg/ml. Do not vortex.
<b>Storage:</b>	Store at 2-8 °C for up to one month. Store at -80 °C for up to one year. Avoid repeated freeze/thaw cycles.
<b>UniProt Primary AC:</b>	Q61581 ( <a href="#">UniProt</a> , <a href="#">ExPASy</a> )
<b>KEGG:</b>	mmu:29817
<b>String:</b>	<a href="#">10090.ENSMUSP00000128318</a>

# Datasheet

Version: 2.0.0  
Revision date: 11 Feb 2025



**Molecular Weight:** Calculated MW: 24.3 kDa  
Observed MW (SDS-PAGE): 27 kDa

**Sequence Fragment:** Lys88-Leu281

**Sequence:** KSR KRRKGKAGAA AGGPATLAVC VCKSRYPCVG SNGITYPSGC QLRAASLRAE SRGEKAITQV  
SKGTC  
EQGPS IVTPPKDIWN VTGAKVFLSC EVIGIPTPVL IWNKVKRDHS GVQRTELLPG DRENLAIQTR  
GGP  
EKHEVTG WVLVSPLSKE DAGEYECHAS NSQQASAAA KITVVDALHE IPLKKGEGAQ L

**Tag:** N-terminal His tag

**Buffer:** Prior to lyophilization: PBS, pH 7.4, containing 0.01% Sarcosyl, 1 mM DTT, 5% Trehalose and Proclin-300.

**Activity:** Not tested

**Concentration:** Prior to lyophilization: 200 µg/ml

**Note:** This product is for research use only.  
Not for human consumption, cosmetic, therapeutic or diagnostic use.

For Reference Only