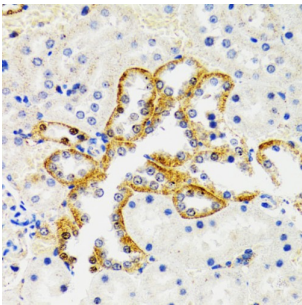
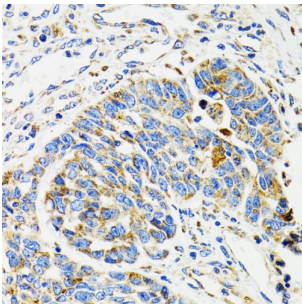


## SH2B Adaptor Protein 1 (SH2B1) Antibody

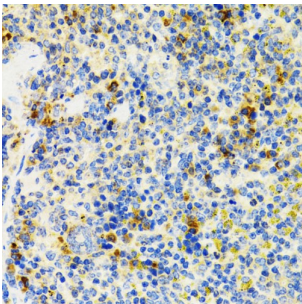
Catalogue No.: abx004263



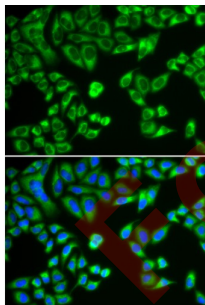
Immunohistochemistry of paraffin-embedded Rat kidney using SH2B1 Antibody (1/100 dilution, 40x lens).



Immunohistochemistry of paraffin-embedded Human esophageal cancer using SH2B1 Antibody (1/100 dilution, 40x lens).



Immunohistochemistry of paraffin-embedded Mouse spleen using SH2B1 Antibody (1/100 dilution, 40x lens).



Immunofluorescence analysis of HeLa cells using SH2B1 Antibody

SH2B1 Antibody is a Rabbit Polyclonal antibody against SH2B1. This gene encodes a member of the SH2-domain containing mediators family. The encoded protein mediates activation of various kinases and may function in cytokine and growth factor receptor signaling and cellular transformation. Alternatively spliced transcript variants have been described.

**Target:** SH2B Adaptor Protein 1 (SH2B1)

**Clonality:** Polyclonal

# Datasheet

Version: 4.0.0  
Revision date: 02 Feb 2025



|                               |   |
|-------------------------------|---|
| <b>Reactivity:</b>            | Human, Mouse, Rat   |
| <b>Tested Applications:</b>   | IHC, IF/ICC   |
| <b>Host:</b>                  | Rabbit  |
| <b>Recommended dilutions:</b> | IHC-P: 1/50 - 1/200, IF/ICC: 1/20 - 1/50. Not tested in IHC-F. Optimal dilutions/concentrations should be determined by the end user. |
| <b>Conjugation:</b>           | Unconjugated  |
| <b>Immunogen:</b>             | Recombinant fusion protein corresponding to human SH2B1   |
| <b>Isotype:</b>               | IgG   |
| <b>Form:</b>                  | Liquid  |
| <b>Purification:</b>          | Purified by affinity chromatography.  |
| <b>Storage:</b>               | Aliquot and store at -20°C. Avoid repeated freeze/thaw cycles.  |
| <b>UniProt Primary AC:</b>    | Q9NRF2 ( <a href="#">UniProt</a> , <a href="#">ExPASy</a> )   |
| <b>Gene Symbol:</b>           | SH2B1   |
| <b>GeneID:</b>                | <a href="#">25970</a>   |
| <b>NCBI Accession:</b>        | NP_056318.2   |
| <b>String:</b>                | <a href="#">9606.ENSP00000321221</a>  |
| <b>Buffer:</b>                | PBS, pH 7.3, containing 0.02% sodium azide, 50% glycerol.   |
| <b>Concentration:</b>         | 1 mg/ml   |
| <b>Note:</b>                  | This product is for research use only.  |