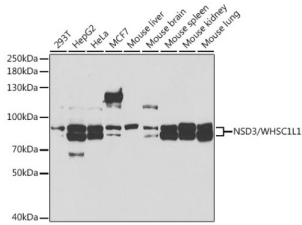
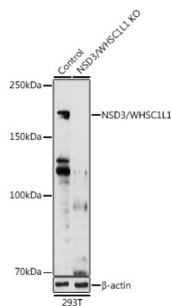


Wolf-Hirschhorn Syndrome Candidate 1-Like Protein (WHSC1L1) Antibody

Catalogue No.: abx004269



Western blot analysis of various lysates using [KO Validated] NSD3/WHSC1L1 Antibody at 1/1000 dilution. Secondary antibody: HRP-conjugated Goat anti-Rabbit IgG (H+L) at 1/10000 dilution. Lysates/proteins: 25 µg per lane. Blocking buffer: 3% nonfat dry milk in TBST. Exposure time: 90s.



Western blot analysis of lysates from wild type (WT) and NSD3/WHSC1L1 knockout (KO) 293T cells, using [KO Validated] NSD3/WHSC1L1 Antibody at 1/1000 dilution. Secondary antibody: HRP-conjugated Goat anti-Rabbit IgG (H+L) at 1/10000 dilution. Lysates/proteins: 25 µg per lane. Blocking buffer: 3% nonfat dry milk in TBST. Exposure time: 30s.

WHSC1L1 Antibody is a Rabbit Polyclonal antibody against WHSC1L1. This gene is related to the Wolf-Hirschhorn syndrome candidate-1 gene and encodes a protein with PWWP (proline-tryptophan-tryptophan-proline) domains. The function of the protein has not been determined. Two alternatively spliced variants have been described.

- Target:** Wolf-Hirschhorn Syndrome Candidate 1-Like Protein (WHSC1L1)
- Clonality:** Polyclonal
- Reactivity:** Human, Mouse, Rat
- Tested Applications:** ELISA, WB
- Host:** Rabbit
- Recommended dilutions:** ELISA: 1 µg/ml, WB: 1/500 - 1/1000. Optimal dilutions/concentrations should be determined by the end user.
- Conjugation:** Unconjugated
- Immunogen:** Recombinant fusion protein containing a sequence corresponding to amino acids 400-600 of human NSD3/NSD3/WHSC1L1.
- Isotype:** IgG

Datasheet

Version: 3.0.0
Revision date: 13 Mar 2025



Form:	Liquid
Purification:	Purified by affinity chromatography.
Storage:	Aliquot and store at -20°C. Avoid repeated freeze/thaw cycles.
UniProt Primary AC:	Q9BZ95 (UniProt , ExPASy)
Gene Symbol:	NSD3
GeneID:	54904
NCBI Accession:	NP_060248.2
String:	9606.ENSP00000313983
Molecular Weight:	Calculated MW: 162 kDa Observed MW: 180 kDa
Buffer:	PBS, pH 7.3, containing 0.09% sodium azide, 50% glycerol.
Concentration:	> 0.2 mg/ml
Note:	THIS PRODUCT IS FOR RESEARCH USE ONLY. NOT FOR USE IN DIAGNOSTIC, THERAPEUTIC OR COSMETIC PROCEDURES. NOT FOR HUMAN OR ANIMAL CONSUMPTION.

For Reference Only