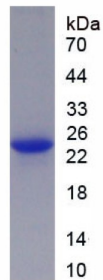


## Human Interleukin 1 Receptor Like Protein 1 (IL1RL1) Protein

Catalogue No.: abx067413



SDS-PAGE analysis of recombinant Human IL1RL1.

Human Interleukin 1 Receptor Like Protein 1 (IL1RL1) is a recombinant Human protein produced in a Prokaryotic expression system (E. coli).

**Target:** Interleukin 1 Receptor Like Protein 1 (IL1RL1)

**Origin:** Human

**Expression:** Recombinant

**Tested Applications:** WB, SDS-PAGE

**Host:** E. coli

**Conjugation:** Unconjugated

**Form:** Lyophilized

**Purity:** > 95%

**Reconstitution:** To keep the original salt concentration, we recommend reconstituting to the original concentration prior to lyophilization (see Concentration) in ddH<sub>2</sub>O. If a lower concentration is required, dilute in 20 mM Tris, 150 mM NaCl, pH 8.0. If a higher concentration is required, the product can be reconstituted directly in 20 mM Tris, 150 mM NaCl, pH 8.0, though please note that this will change the overall salt concentration. The stock concentration should be between 0.1-1.0 mg/ml. Do not vortex.

**Storage:** Store at 2-8 °C for up to one month. Store at -80 °C for up to one year. Avoid repeated freeze/thaw cycles.

**UniProt Primary AC:** Q01638 ([UniProt](#), [ExPASy](#))

**Gene Symbol:** IL1RL1

**GenID:** [9173](#)

# Datasheet

Version: 2.0.0  
Revision date: 12 Mar 2025



**OMIM:** [601203](#)

**HGNC:** 5998

**Ensembl:** ENSG00000115602

**Molecular Weight:** Calculated MW: 21.7 kDa  
Observed MW (SDS-PAGE): 24 kDa

**Sequence Fragment:** Ala357-Arg532

**Sequence:** ATLL WRDIAPYKT RNDGKLYDAY VVYPRNYKSS TDGASRVEHF VHQILPDVLE NKCGYTLCIY  
GRDM  
LPGEDV VTAVETNIRK SRRHIFILTP QITHNKEFAY EQEVALHCAL IQNDAKVILI EMEALSELDM LQ  
AEALQDSL QHLMKVQGTI KWREDHIANK RSLNSKFWKH VR

**Tag:** N-terminal His tag

**Buffer:** Prior to lyophilization: 20 mM Tris, 150 mM NaCl, pH 8.0, containing 0.01% Sarcosyl, 5% Trehalose.

**Activity:** Not tested

**Concentration:** Prior to lyophilization: 200 µg/ml

**Note:** THIS PRODUCT IS FOR RESEARCH USE ONLY. NOT FOR USE IN DIAGNOSTIC, THERAPEUTIC OR COSMETIC PROCEDURES. NOT FOR HUMAN OR ANIMAL CONSUMPTION.

For Reference Only