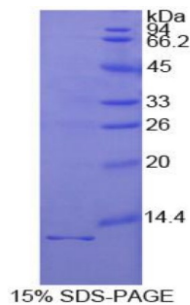


Human Interleukin 1 Receptor Type I (IL1R1) Protein

Catalogue No.: abx067414



SDS-PAGE analysis of Human IL1R1 Protein.

Recombinant Interleukin 1 Receptor Type I (IL1R1) is a recombinant Human protein produced in a Prokaryotic expression system (E. coli).

Target: Interleukin 1 Receptor Type I (IL1R1)

Origin: Human

Expression: Recombinant

Tested Applications: WB, SDS-PAGE

Host: E. coli

Conjugation: Unconjugated

Form: Lyophilized

Purity: > 95%

Reconstitution: To keep the original salt concentration, we recommend reconstituting to the original concentration prior to lyophilization (see Concentration) in ddH₂O. If a lower concentration is required, dilute in PBS, pH 7.4. If a higher concentration is required, the product can be reconstituted directly in PBS, pH 7.4, though please note that this will change the overall salt concentration. The stock concentration should be between 0.1-1.0 mg/ml. Do not vortex.

Storage: Store at 2-8 °C for up to one month. Store at -80 °C for up to one year. Avoid repeated freeze/thaw cycles.

UniProt Primary AC: P14778 ([UniProt](#), [ExPASy](#))

KEGG: hsa:3554

String: [9606.ENSP00000386380](#)

Datasheet

Version: 2.0.0
Revision date: 27 Nov 2024



Molecular Weight: Calculated MW: 11.9 kDa

Sequence Fragment: Asp21-Ile109

Sequence: DKCKEREEKI ILVSSANEID VRPCPLNPNE HKGTITWYKD DSKTPVSTEQ ASRIHQHKEK
LWFVPAKVE
D SGHYCVVRN SSYCLRIKI

Tag: N-terminal His tag

Buffer: Prior to lyophilization: PBS, pH 7.4, containing 0.01% Sarcosyl, 1 mM DTT, 5% Trehalose and Proclin-300.

Activity: Not tested

Concentration: Prior to lyophilization: 200 µg/ml

Note: This product is for research use only.
Not for human consumption, cosmetic, therapeutic or diagnostic use.

For Reference Only