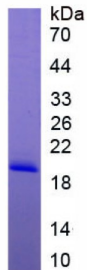


## Rat Interleukin 17B (IL17B) Protein

Catalogue No.: abx067473



SDS-PAGE analysis of recombinant Rat Interleukin 17B Protein.

Rat Interleukin 17B (IL17B) is a recombinant Rat protein produced in a Prokaryotic expression system (E. coli).

This protein is the immunogen for the following antibodies: [abx101513](#)

<b>Target:</b>	Interleukin 17B (IL17B)
<b>Origin:</b>	Rat
<b>Expression:</b>	Recombinant
<b>Tested Applications:</b>	WB, SDS-PAGE
<b>Host:</b>	E. coli
<b>Conjugation:</b>	Unconjugated
<b>Form:</b>	Lyophilized
<b>Purity:</b>	> 95%
<b>Reconstitution:</b>	To keep the original salt concentration, we recommend reconstituting to the original concentration prior to lyophilization (see Concentration) in ddH <sub>2</sub> O. If a lower concentration is required, dilute in 10 mM PBS, pH 7.4. If a higher concentration is required, the product can be reconstituted directly in 10 mM PBS, pH 7.4, though please note that this will change the overall salt concentration. The stock concentration should be between 0.1-1.0 mg/ml. Do not vortex.
<b>Storage:</b>	Store at 2-8 °C for up to one month. Store at -80 °C for up to one year. Avoid repeated freeze/thaw cycles.
<b>UniProt Primary AC:</b>	G3V8K9 ( <a href="#">UniProt</a> , <a href="#">ExpASY</a> )
<b>String:</b>	<a href="#">10116.ENSRNOP00000026679</a>

# Datasheet

Version: 3.0.0  
Revision date: 11 Feb 2025



**Molecular Weight:** Calculated MW: 19.1 kDa  
Observed MW (SDS-PAGE): 19 kDa

**Sequence Fragment:** Arg23-Phe180

**Sequence:** RNTKGKRK GQGRPGPLAP GPHQVPLDLV SRVKPYARME EYERNLGEMV AQLRNSSEPA  
KKKCEVNLQL  
WLSNKRSLSP WGYSINHDPS RIPEDLPEAR CLCLGCVNPF TMQEDRSMVS VPVFSQVPVR  
RRLCPQPPR  
P GPCRQRVME TIAVGCTCIF

**Tag:** N-terminal His tag

**Buffer:** Prior to lyophilization: PBS, pH 7.4, containing 0.01% Sarcosyl, 5% Trehalose.

**Activity:** Not tested

**Concentration:** Prior to lyophilization: 1200 µg/ml

**Note:** This product is for research use only.  
Not for human consumption, cosmetic, therapeutic or diagnostic use.

For Reference Only