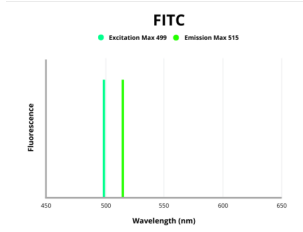


Sheep Anti-Cow IgM Antibody (FITC)

Catalogue No.: abx401169



Fluorescence emission spectra of FITC.

Sheep anti-Cow IgM Antibody (FITC) is a Sheep Polyclonal antibody conjugated to FITC against Cow IgM.

Target: Cow IgM

Clonality: Polyclonal

Reactivity: Cow

Tested Applications: IHC, FCM

Host: Sheep

Recommended dilutions: Validated in IHC-F. Optimal dilutions/concentrations should be determined by the end user.

Conjugation: FITC

Excitation/Emission: 499/515

Laser Line: 488

Isotype: IgG

Form: Liquid

Purification: Purified

Storage: Aliquot and store at 2°C to 8°C upon receipt.

Buffer: PBS, 0.2% BSA. Contains sodium azide.

Concentration: 1.0 mg/ml

Datasheet

Version: 1.0.0

Revision date: 27 Dec 2024



Note: This product is for research use only.

For Reference Only