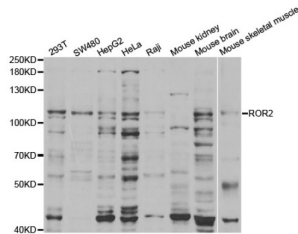


Receptor Tyrosine Kinase Like Orphan Receptor 2 (ROR2) Antibody

Catalogue No.: abx004297



Western blot analysis of extracts of various cell lines, using ROR2 antibody (abx004297) at 1/1000 dilution.

ROR2 Antibody is a Rabbit Polyclonal antibody against ROR2. The protein encoded by this gene is a receptor protein tyrosine kinase and type I transmembrane protein that belongs to the ROR subfamily of cell surface receptors. The protein may be involved in the early formation of the chondrocytes and may be required for cartilage and growth plate development. Mutations in this gene can cause brachydactyly type B, a skeletal disorder characterized by hypoplasia/aplasia of distal phalanges and nails. In addition, mutations in this gene can cause the autosomal recessive form of Robinow syndrome, which is characterized by skeletal dysplasia with generalized limb bone shortening, segmental defects of the spine, brachydactyly, and a dysmorphic facial appearance.

Target:	Receptor Tyrosine Kinase Like Orphan Receptor 2 (ROR2)
Clonality:	Polyclonal
Reactivity:	Human, Mouse, Rat
Tested Applications:	WB, IHC
Host:	Rabbit
Recommended dilutions:	WB: 1/500 - 1/1000, IHC-P: 1/100 - 1/200. Not tested in IHC-F. Optimal dilutions/concentrations should be determined by the end user.
Conjugation:	Unconjugated
Immunogen:	A synthetic peptide corresponding to a sequence within amino acids 100-200 of human ROR2.
Isotype:	IgG
Form:	Liquid
Purification:	Purified by affinity chromatography.
Storage:	Aliquot and store at -20°C. Avoid repeated freeze/thaw cycles.

Datasheet

Version: 2.0.0
Revision date: 27 Dec 2024



UniProt Primary AC: Q01974 ([UniProt](#), [ExPASy](#))

Gene Symbol: ROR2

GeneID: [4920](#)

NCBI Accession: NP_004551.2

KEGG: hsa:4920

String: [9606.ENSP00000364860](#)

Molecular Weight: Calculated MW: 105 kDa
Observed MW: 140 kDa

Buffer: PBS, pH 7.3, containing 0.02% sodium azide, 50% glycerol.

Concentration: > 0.2 mg/ml

Note: This product is for research use only.

For Reference Only