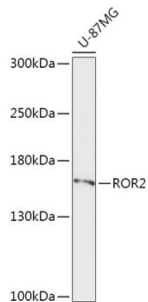


Receptor Tyrosine Kinase Like Orphan Receptor 2 (ROR2) Antibody

Catalogue No.: abx004297



Western blot analysis of extracts of U-87MG cells using ROR2 Antibody (1/1000 dilution).

ROR2 Antibody is a Rabbit Polyclonal antibody against ROR2. The protein encoded by this gene is a receptor protein tyrosine kinase and type I transmembrane protein that belongs to the ROR subfamily of cell surface receptors. The protein may be involved in the early formation of the chondrocytes and may be required for cartilage and growth plate development. Mutations in this gene can cause brachydactyly type B, a skeletal disorder characterized by hypoplasia/aplasia of distal phalanges and nails. In addition, mutations in this gene can cause the autosomal recessive form of Robinow syndrome, which is characterized by skeletal dysplasia with generalized limb bone shortening, segmental defects of the spine, brachydactyly, and a dysmorphic facial appearance.

| | |
|-------------------------------|--------------------------------------------------------------------------------------------|
| Target: | Receptor Tyrosine Kinase Like Orphan Receptor 2 (ROR2) |
| Clonality: | Polyclonal |
| Reactivity: | Human, Mouse, Rat |
| Tested Applications: | WB |
| Host: | Rabbit |
| Recommended dilutions: | WB: 1/500 - 1/2000. Optimal dilutions/concentrations should be determined by the end user. |
| Conjugation: | Unconjugated |
| Immunogen: | A synthetic peptide corresponding to human ROR2 |
| Isotype: | IgG |
| Form: | Liquid |
| Purification: | Purified by affinity chromatography. |
| Storage: | Aliquot and store at -20°C. Avoid repeated freeze/thaw cycles. |
| UniProt Primary AC: | Q01974 (UniProt , ExpASY) |

Datasheet

Version: 4.0.0
Revision date: 12 Mar 2025



Gene Symbol: ROR2

GeneID: [4920](#)

NCBI Accession: NP_004551.2

KEGG: hsa:4920

String: [9606.ENSP00000364860](#)

Molecular Weight: Calculated MW: 104 kDa
Observed MW: 135 kDa

Buffer: PBS, pH 7.3, containing 0.02% sodium azide, 50% glycerol.

Concentration: 1 mg/ml

Note: THIS PRODUCT IS FOR RESEARCH USE ONLY. NOT FOR USE IN DIAGNOSTIC, THERAPEUTIC OR COSMETIC PROCEDURES. NOT FOR HUMAN OR ANIMAL CONSUMPTION.

For Reference Only