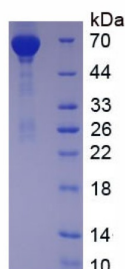


## Dog Albumin (ALB) Protein

Catalogue No.: abx655874



SDS-PAGE analysis of native Dog Albumin.

Dog Albumin Protein (Native) is a native Dog protein.

<b>Target:</b>	Albumin (ALB)
<b>Origin:</b>	Dog
<b>Expression:</b>	Native
<b>Tested Applications:</b>	WB, SDS-PAGE
<b>Host:</b>	Dog
<b>Conjugation:</b>	Unconjugated
<b>Form:</b>	Lyophilized
<b>Purity:</b>	> 90% (SDS-PAGE)
<b>Purification:</b>	Purified by salt co-precipitation and ion-exchange chromatography.
<b>Reconstitution:</b>	To keep the original salt concentration, we recommend reconstituting to the original concentration prior to lyophilization (see Concentration) in ddH <sub>2</sub> O. If a lower concentration is required, dilute in 10 mM PBS, pH 7.4. If a higher concentration is required, the product can be reconstituted directly in 10 mM PBS, pH 7.4, though please note that this will change the overall salt concentration. The stock concentration should be between 0.1-1.0 mg/ml. Do not vortex.
<b>Storage:</b>	Store at 2-8 °C for up to one month. Store at -80 °C for up to one year. Avoid repeated freeze/thaw cycles.
<b>Molecular Weight:</b>	Calculated MW: 69 kDa Observed MW (SDS-PAGE): 69 kDa
<b>Sequence:</b>	This product is a native protein and the sequence has not been determined.

# Datasheet

Version: 4.0.0

Revision date: 08 Nov 2024



**Buffer:** Prior to lyophilization: PBS, pH 7.4, containing 5% Trehalose.

**Activity:** Not tested

**Concentration:** Prior to lyophilization: 200 µg/ml

**Note:** This product is for research use only.  
Not for human consumption, cosmetic, therapeutic or diagnostic use.

For Reference Only