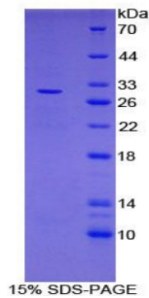


## Mouse Leucine Rich Repeat Containing Protein 32 (LRRC32) Protein

Catalogue No.: abx067753



SDS-PAGE analysis of Mouse LRRC32 Protein.

Recombinant Leucine Rich Repeat Containing Protein 32 (LRRC32) is a recombinant Mouse protein produced in a Prokaryotic expression system (E. coli).

<b>Target:</b>	Leucine Rich Repeat Containing Protein 32 (LRRC32)
<b>Origin:</b>	Mouse
<b>Expression:</b>	Recombinant
<b>Tested Applications:</b>	WB, SDS-PAGE
<b>Host:</b>	E. coli
<b>Conjugation:</b>	Unconjugated
<b>Form:</b>	Lyophilized
<b>Purity:</b>	> 95%
<b>Reconstitution:</b>	To keep the original salt concentration, we recommend reconstituting to the original concentration prior to lyophilization (see Concentration) in ddH <sub>2</sub> O. If a lower concentration is required, dilute in PBS, pH 7.4. If a higher concentration is required, the product can be reconstituted directly in PBS, pH 7.4, though please note that this will change the overall salt concentration. The stock concentration should be between 0.1-1.0 mg/ml. Do not vortex.
<b>Storage:</b>	Store at 2-8 °C for up to one month. Store at -80 °C for up to one year. Avoid repeated freeze/thaw cycles.
<b>UniProt Primary AC:</b>	G3XA59 ( <a href="#">UniProt</a> , <a href="#">ExPASy</a> )
<b>KEGG:</b>	mmu:434215
<b>String:</b>	<a href="https://string-db.org/10090.ENSMUSP00000133205">10090.ENSMUSP00000133205</a>

# Datasheet

Version: 2.0.0  
Revision date: 10 Mar 2025



**Molecular Weight:** Calculated MW: 29.9 kDa

**Sequence Fragment:** Gln400-Leu643

**Sequence:** Q ELPPYTFASL ASLQRLNLQG NQVSPCGGPA EPGPPGCVDF SGIPTLHVLN MAGNSMGMLR  
AGSFLHT  
PLT ELDLSTNPGL DVATGALVGL EASLEVLELQ GNGLTVLRVD LPCFLRLKRL NLAENQLSHL  
PAWTR  
AVSLE VLDLRNNSFS LLPGNAMGGL ETSLRRLYLQ GNPLSCCGNG WLAAQLHQGR VDVDATQDLI  
CRF  
GSQEELS LSLVRPEDCE KGGLKNVNL I LLSFTLVSA IVL

**Tag:** N-terminal His tag

**Buffer:** Prior to lyophilization: PBS, pH 7.4, containing 0.01% Sarcosyl, 1 mM DTT, 5% Trehalose and Proclin-300.

**Activity:** Not tested

**Concentration:** Prior to lyophilization: 200 µg/ml

**Note:** THIS PRODUCT IS FOR RESEARCH USE ONLY. NOT FOR USE IN DIAGNOSTIC, THERAPEUTIC OR COSMETIC PROCEDURES. NOT FOR HUMAN OR ANIMAL CONSUMPTION.

For Reference Only