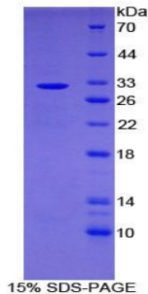


# Human Leucine-Rich Repeats and Immunoglobulin-Like Domains Protein 1 (LRIG1) Protein

Catalogue No.: abx067759



SDS-PAGE analysis of Human LRIG1 Protein.

Recombinant Leucine-Rich Repeats and Immunoglobulin-Like Domains Protein 1 (LRIG1) is a recombinant Human protein produced in a Prokaryotic expression system (E. coli).

<b>Target:</b>	Leucine-Rich Repeats and Immunoglobulin-Like Domains Protein 1 (LRIG1)
<b>Origin:</b>	Human
<b>Tested Applications:</b>	WB, SDS-PAGE
<b>Host:</b>	E. coli
<b>Conjugation:</b>	Unconjugated
<b>Form:</b>	Lyophilized
<b>Purity:</b>	> 95%
<b>Reconstitution:</b>	To keep the original salt concentration, we recommend reconstituting to the original concentration prior to lyophilization (see Concentration) in ddH <sub>2</sub> O. If a lower concentration is required, dilute in PBS, pH 7.4. If a higher concentration is required, the product can be reconstituted directly in PBS, pH 7.4, though please note that this will change the overall salt concentration. The stock concentration should be between 0.1-1.0 mg/ml. Do not vortex.
<b>Storage:</b>	Store at 2-8 °C for up to one month. Store at -80 °C for up to one year. Avoid repeated freeze/thaw cycles.
<b>UniProt Primary AC:</b>	Q96JA1 ( <a href="#">UniProt</a> , <a href="#">ExpASY</a> )
<b>Gene Symbol:</b>	LRIG1
<b>GeneID:</b>	<a href="#">26018</a>

# Datasheet

Version: 2.0.0  
Revision date: 13 Mar 2025



**OMIM:** [608868](#)

**KEGG:** hsa:26018

**String:** [9606.ENSP00000273261](#)

**Molecular Weight:** Calculated MW: 31.4 kDa

**Sequence Fragment:** His739-Leu995

**Sequence:** HH LTPDNQLLVV QNVVAEDAGR YTCEMSNTLG TERAHSQLSV LPAAGCRKDG TTVGIFTIAV  
VSSIVL  
TSLV WVCIIYQTRK KSEEYSVTNT DETVPPDVP SYLSSQGTLS DRQETVVRTE GGPQANGHIE  
SNGV  
CPRDAS HFPEPDTHSV ACRQPKLCAG SAYHKEPWKA MEKAEGTPGP HKMEHGGRVV  
CSDCNTEVDC YS  
RGQAFHPQ PVS RDSAQPS APNGPEPGGS DQEHSPHHQC SRTAAGSCPE CQGSL

**Tag:** N-terminal His tag

**Buffer:** Prior to lyophilization: PBS, pH 7.4, containing 0.01% Sarcosyl, 1 mM DTT, 5% Trehalose and Proclin-300.

**Activity:** Not tested

**Concentration:** Prior to lyophilization: 200 µg/ml

**Note:** THIS PRODUCT IS FOR RESEARCH USE ONLY. NOT FOR USE IN DIAGNOSTIC, THERAPEUTIC OR COSMETIC PROCEDURES. NOT FOR HUMAN OR ANIMAL CONSUMPTION.