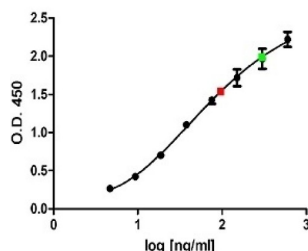


# Human Albumin (ALB) Protein

Catalogue No.: abx670201



Sandwich ELISA analysis using Mouse Anti-Human Albumin Antibody ([abx411071](#), 5 µg/ml) as the capture antibody and Sheep Anti-Human Albumin Antibody ([abx412066](#), 0.75 µg/ml, biotin-conjugated prior to carrying out the assay) as the detection antibody. Samples tested: native Human Albumin purified from urine (1/25,000 - 1/250,000 dilution); plasma (1/30,000 dilution, green); plasma (1/60,000 dilution, red).

Human Albumin (ALB) Protein is a Native protein purified from Human urine.

For a sandwich immunoassay, it is recommended to use [abx411071](#) as the capture antibody, [abx412066](#) as the detection antibody, and abx670201 (this product) as the antigen.

**Target:** Albumin (ALB)

**Origin:** Human

**Tested Applications:** ELISA

**Host:** Human

**Recommended dilutions:** Optimal dilutions/concentrations should be determined by the end user.

**Conjugation:** Unconjugated

**Form:** Lyophilized

**Purity:** > 99% (SDS-PAGE)

**Reconstitution:** Reconstitute in phosphate buffer containing 0.15 M NaCl, pH > 7.0. If the product is not used for functional studies, 0.09% sodium azide can be added for long-term storage.

**Storage:** Store lyophilized at 4 °C. Aliquot and store at -20 °C after reconstitution. Avoid repeated freeze/thaw cycles.

**UniProt Primary AC:** P02768 ([UniProt](#), [ExPASy](#))

**Gene Symbol:** ALB

**GeneID:** [213](#)

# Datasheet

Version: 3.0.0

Revision date: 23 Apr 2025



**KEGG:** hsa:213

**String:** [9606.ENSP00000295897](#)

**Molecular Weight:** 66 kDa

**Buffer:** Does not contain preservatives.

**Note:** THIS PRODUCT IS FOR RESEARCH USE ONLY. NOT FOR USE IN DIAGNOSTIC, THERAPEUTIC OR COSMETIC PROCEDURES. NOT FOR HUMAN OR ANIMAL CONSUMPTION.

For Reference Only