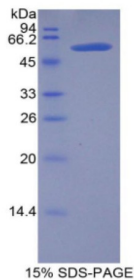


Mouse Lipase, Hepatic (LIPC) Protein

Catalogue No.: abx067791



SDS-PAGE analysis of Mouse Lipase, Hepatic Protein.

Recombinant Lipase, Hepatic (LIPC) is a recombinant Mouse protein produced in a Prokaryotic expression system (E. coli).

Target: Lipase, Hepatic (LIPC)**Origin:** Mouse**Expression:** Recombinant**Tested Applications:** WB, SDS-PAGE**Host:** E. coli**Conjugation:** Unconjugated**Form:** Lyophilized**Purity:** > 95%**Reconstitution:** To keep the original salt concentration, we recommend reconstituting to the original concentration prior to lyophilization (see Concentration) in ddH₂O. If a lower concentration is required, dilute in PBS, pH 7.4. If a higher concentration is required, the product can be reconstituted directly in PBS, pH 7.4, though please note that this will change the overall salt concentration. The stock concentration should be between 0.1-1.0 mg/ml. Do not vortex.**Storage:** Store at 2-8 °C for up to one month. Store at -80 °C for up to one year. Avoid repeated freeze/thaw cycles.**UniProt Primary AC:** P27656 ([UniProt](#), [ExPASy](#))**KEGG:** mmu:15450**String:** [10090.ENSMUSP00000034731](https://www.ncbi.nlm.nih.gov/protein/10090)

Datasheet

Version: 3.0.0
Revision date: 24 Apr 2025



Molecular Weight: Calculated MW: 60.3 kDa

Sequence Fragment: Ser159-Ile415

Sequence: SR SKVHLIGYSL GAHVS GFAGSSMDGKNKIGR ITGLDPAGPM FEGTSPNERL SPDDANFVDA
IHTFTREHMG LSVGIKQPIAHYDFYPNGGS FQPGCHFLEL YKHIAEHGLN AITQTIKCAH
ERSVHLFIDS LQHSDLQSIGFQCSDMGFS QGLCLSCKKG RCNTLGYDIR KDRSGKSKRL
FLITRAQSPF KVYHYQFKIQFINQIEKPVE PTFTMSLLGT KEEIKRIPIT LGEGITSNKT YSFLITLDKD
IGELI

Tag: N-terminal His tag and GST tag

Buffer: Prior to lyophilization: PBS, pH 7.4, containing 0.01% Sarcosyl, 1 mM DTT, 5% Trehalose and Proclin-300.

Activity: Not tested

Concentration: Prior to lyophilization: 200 µg/ml

Note: THIS PRODUCT IS FOR RESEARCH USE ONLY. NOT FOR USE IN DIAGNOSTIC, THERAPEUTIC OR COSMETIC PROCEDURES. NOT FOR HUMAN OR ANIMAL CONSUMPTION.

For Reference Only